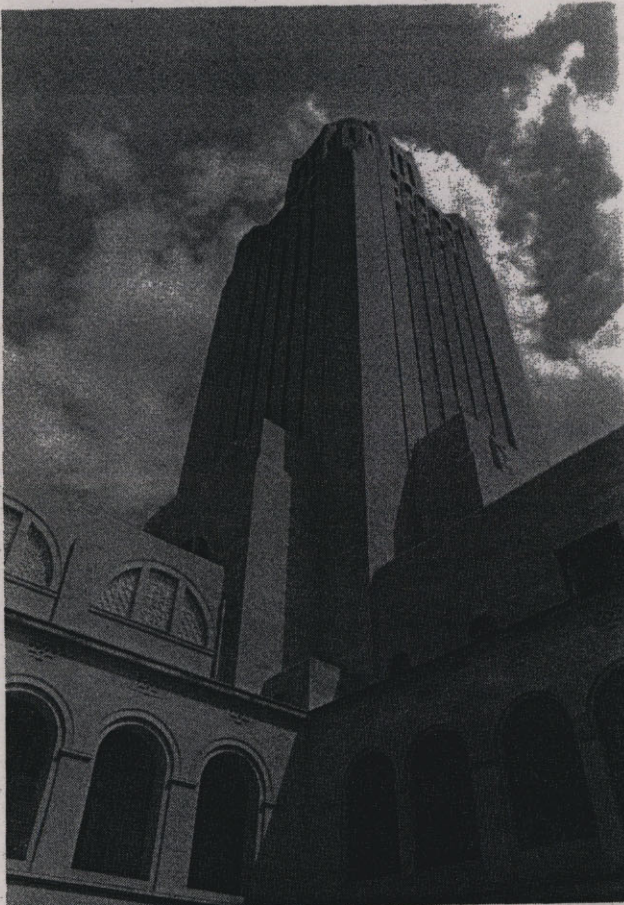


**1998**  
**Biennial Report**

**Presented to the  
Governor and the Legislature**

**on the**

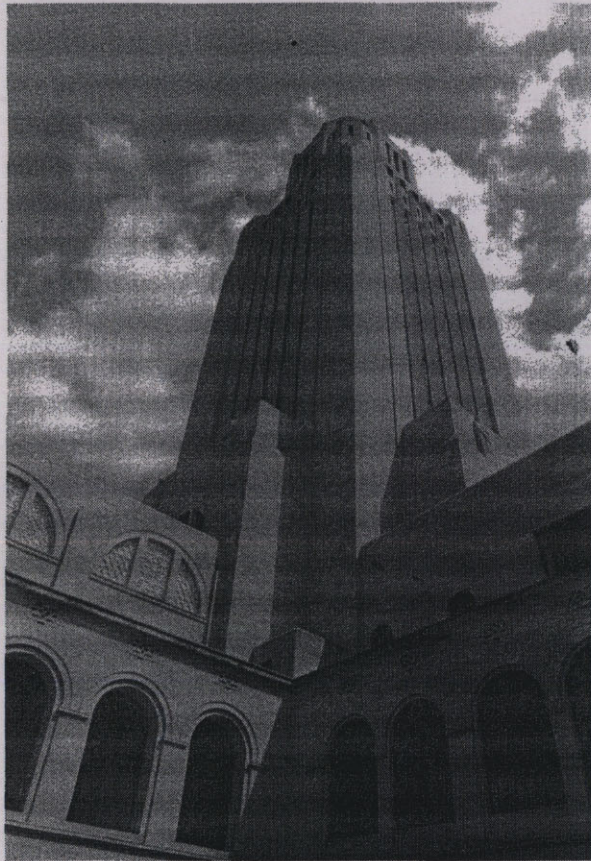
**Nebraska  
Resources  
Development  
Fund**



**Assist with the Development and Wise Use of Nebraska's Land and Water Resources**

Published by the  
Nebraska Natural Resources Commission  
August 1998

*Assist with the Development and Wise Use of Nebraska's Land and Water Resources*



It is a pleasure to present the **1998 Biennial Report for the Nebraska Resources Development Fund**. Once again this fund has proven to be an important, effective and stable means for providing state financial assistance for development of sound water resources projects in Nebraska. The Fund, now in its 24th year, also provides an outstanding example of creative federal-state-local partnerships for project planning, design and funding.

**To date Nebraska Resources Development Fund projects have been sponsored or co-sponsored by 17 Natural Resources Districts, 5 irrigation districts, 10 municipalities, and 1 county.** A number of the projects have been tied in with Corps of Engineers Section 205 flood control projects or the Natural Resources Conservation Service's small watershed projects to stretch funding as far as possible. Flood control projects continue to demonstrate their effectiveness year after year, while the public is heavily utilizing recreation facilities many of the projects provide. With a growing demand for water-based recreation, the importance of adequate inflow and excellent water quality are key factors in project planning and are fully considered to assure broad and long-term benefits.

A special thanks to the Legislature, with Governor Nelson's support, for continuing to provide funding for this very important program for the State of Nebraska. The Natural Resources Commission looks forward to working with sponsors during the next biennium to ensure those local needs and opportunities are met with environmentally sound projects.

**LIBRARY COPY**

DEPARTMENT OF NATURAL RESOURCES  
301 CENTENNIAL MALL SOUTH  
P.O. BOX 94676  
LINCOLN, NEBRASKA 68509

A handwritten signature in cursive script that reads "Dayle Williamson".

Dayle E. Williamson  
Director of Natural Resources  
Nebraska Natural Resources Commission

**Nebraska Resources Development Fund**

*Assist with the Development and Wise Use of Nebraska's Land and Water Resources*

LIBRARY COPY  
DEPARTMENT OF NATURAL RESOURCES  
301 CENTENNIAL MALL SOUTH  
LINCOLN, NEBRASKA 68503



## Nebraska Resources Development Fund Biennial Report

(July 1, 1996 - June 30, 1998)

Presented to the Governor and the Legislature

August 1998

### INTRODUCTION

The **Nebraska Resources Development Fund Act of 1974** created a fund to assist with the development and wise use of Nebraska's water and land resources. The Nebraska Resources Development Fund can be used to provide grants and/or loans to political subdivisions of the state or an agency of the state, or it can be used by the Natural Resources Commission to acquire an interest in a project in the name of the state. The Act created a conjunctive administrative system with certain responsibilities delegated to the **Natural Resources Commission** and other responsibilities delegated to a statutorily created "**Advisory Board.**" On February 15, 1985, the Director of Natural Resources assumed the responsibilities and duties of the Advisory Board in accordance with the provisions of L.B. 1106.

The primary function of the Director is to determine project and program eligibility for Nebraska Resources Development Fund (NRDF) assistance. The Director must also determine the type of assistance appropriate: Grant, loan or a combination thereof. To ac-

complish these responsibilities, the Director has adopted appropriate rules and regulations, evaluation standards, specifications, and guidelines for implementation. The Director and his staff, along with personnel from other state agencies as appropriate, review each application and the Director must find that a project is economically, financially and technically feasible as well as environmentally acceptable in order for it to be eligible for assistance through the Fund.

The Commission reviews project proposals and, after receiving recommendations from the Director, advises project sponsors whether to proceed with an application and feasibility report. The Commission's primary administrative functions begin once the Director has reviewed the application, determined eligibility, and referred those projects eligible to the Commission. Determination of funding priorities for eligible programs or projects is a sole responsibility of the Commission. Prior to any allocation of funds, the Commission must enter into an agreement and negotiate other necessary documents to be assured that the state

investment is protected. Once this is accomplished, the Commission has responsibility for administering the grant and/or loan and for administering the repayment provisions of a loan.

The application procedure established jointly by the Director and the Commission is a two-step process. The first step involves the submittal of a project proposal by a sponsor, and the second step is a project application. A sponsor may bypass the project proposal and initiate the request by submitting an application; however, in such case the sponsor forfeits the possibility of cost-sharing on the cost of preparation of the application and accompanying feasibility study.

A set of "*Guidelines*" has been distributed for use by project sponsors in fulfilling the requirements of the "*Project Proposal*" and the "*Project Application and Feasibility Report.*" The "*Project Proposal*" is a brief document which outlines the nature of the project, includes a preliminary estimate of project costs, and gives an indication of the sponsor's plans for the project. The Director, after reviewing the

## Nebraska Resources Development Fund

Assist with the Development and Wise Use of Nebraska's Land and Water Resources

project proposal, recommends to the Commission whether the sponsor should proceed with an application and indicates the likely range of NRDF assistance if the project is later found to be eligible. The Commission may provide the sponsor with additional guidance regarding the contents of the application. This process helps ensure that a sponsor covers all areas of concern to the Director and Commission and prevents the inclusion and preparation of unnecessary material.

The application is to include the necessary project description, cost estimates, preliminary design information, description of the manner in which the project will be operated, as well as the statutorily required information to determine whether the project is financially, economically, and technically feasible and environmentally acceptable. If the Director determines a given project is financially, economically, and technically feasible and environmentally acceptable, as well as being an eligible project under the law, he submits a recommendation, containing those findings, to the Commission. That recommendation also stipulates the type of assistance (grant and/or loan) and amount of assistance.

The Commission, at its first regularly scheduled meeting after the Director's recommendation is received, is briefed on all aspects of the project by the project sponsor and Commission staff. Commission policy then provides that the project be automatically referred to its

Program Committee for preparation of a recommendation to the Commission in regard to approval and allocation of funds, with such recommen-

dation to be submitted at the subsequent Commission meeting. A delegation of Commission members must visit a project area before the Commission takes action.

Approval of any project by the Commission constitutes only acceptance or endorsement of the project and does not entitle the sponsor of that project to receive any money from the Development Fund. However, the **obligation of funds does** set aside a given amount of money for a project. After approving a project, the Commission may take ac-

tion on "obligating" or "setting aside" funds for that project if funds are available. Such obligation may be for the entire project or only for an independent or separable component of a project. Additionally, separable components of larger projects may be designated even if the components are not independent of each other, if the project sponsor agrees to such designation. Commission rules and regulations also establish a priority setting system to allocate available funds among the eligible projects on an annual basis.



### Members of the NATURAL RESOURCES COMMISSION

Vince Kramper, *Chairperson*  
Wayne Davis, *Vice-Chairperson*  
Frank Bartak  
Beverly Donaldson  
Joseph Hergott  
Richard Jiskra  
Glen Kroese  
Don Larson

Richard Mercer  
Wilbur Nelson  
LeRoy Pieper  
Donald Roberts  
Mike Shaughnessy  
Roy Stewart  
Dale Watermeier  
Clifford Welsh

PROJECT REVIEW

As of June 30, 1998, **57 water resources projects** have been approved for financial assistance from the Resources Development Fund. The total allocation for these projects is **\$50,157,550.50**. The majority of the projects funded provide for the storage of water and the beneficial use(s) of that water. Flood control, sediment and erosion control, groundwater recharge, fish and wildlife enhancement, and recreation, including fishing, boating, and swimming, have been the primary benefits that have resulted. Several of the funded projects were planned through the Natural Resources Conservation Service's P.L. 566 Watershed Program, its Resource Conservation and Development (RC&D) Program, or the Corps of Engineers' Section 205 Flood Control Program. **During fiscal years 1997 and 1998, three projects were completed and two project proposals were received.**

**BREAKDOWN OF TOTAL COSTS FOR RESOURCES DEVELOPMENT FUND PROJECTS**

The total cost of the 57 projects that have been approved for Resources Development Fund assistance is approximately **\$103,000,000**. Of this amount, the Development Fund has provided **\$50,200,000 (49%)**, federal programs **\$30,900,000 (30%)** and local entities **\$22,100,000 (or 21%)**.



Figures have been rounded off



**49% NEBRASKA RESOURCES DEVELOPMENT FUND**  
**30% FEDERAL PROGRAMS**  
**21% LOCAL ENTITIES**

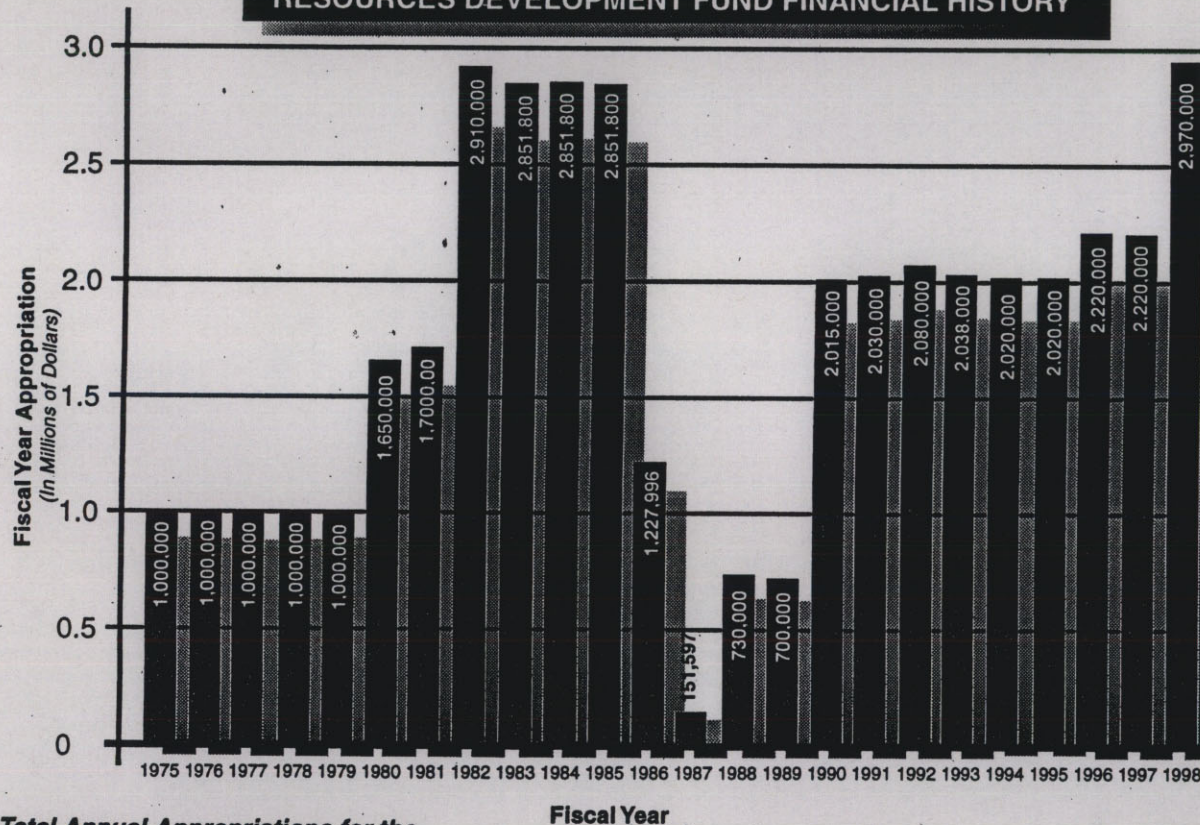
# Nebraska Resources Development Fund

Assist with the Development and Wise Use of Nebraska's Land and Water Resources

## RESOURCES DEVELOPMENT FUND FINANCIAL HISTORY

From its inception, the Resources Development Fund has depended upon general fund appropriations to provide state financial assistance to local project sponsors. The annual appropriations have been:

### RESOURCES DEVELOPMENT FUND FINANCIAL HISTORY



Total Annual Appropriations for the Resources Development Fund from 1975-1998 equals \$42,237,993.73

Fiscal Year	Appropriation
1975	\$ 1,000,000.00
1976	1,000,000.00
1977	1,000,000.00
1978	1,000,000.00
1979	1,000,000.00
1980	1,650,000.00
1981	1,700,000.00
1982	2,910,000.00
1983	2,851,800.00 <sup>1/</sup>
1984	2,851,800.00
1985	2,851,800.00
1986	1,227,996.73 <sup>2/</sup>
1987	151,537.00 <sup>3/</sup>
1988	730,000.00 <sup>4/</sup>
1989	700,000.00
1990	2,015,000.00 <sup>5/</sup>
1991	2,030,000.00 <sup>6/</sup>
1992	2,080,000.00 <sup>7/</sup>
1993	2,038,000.00 <sup>8/</sup>
1994	2,020,000.00 <sup>9/</sup>
1995	2,020,000.00 <sup>10/</sup>
1996	2,220,000.00 <sup>11/</sup>
1997	2,220,000.00 <sup>12/</sup>
1998	2,970,000.00 <sup>13/</sup>

- <sup>1/</sup> Includes \$100,000.00 cash funds
- <sup>2/</sup> Includes \$69,000.00 transferred from Water Management Fund plus \$1,232.73 in operating funds
- <sup>3/</sup> Includes \$50,000.00 cash funds
- <sup>4/</sup> Includes \$30,000.00 cash funds
- <sup>5/</sup> Includes \$15,000.00 cash funds
- <sup>6/</sup> Includes \$30,000.00 cash funds
- <sup>7/</sup> Includes \$80,000.00 cash funds
- <sup>8/</sup> Includes \$38,000.00 cash funds
- <sup>9/</sup> Includes \$50,000.00 cash funds
- <sup>10/</sup> Includes \$50,000.00 cash funds
- <sup>11/</sup> Includes \$50,000.00 cash funds
- <sup>12/</sup> Includes \$50,000.00 cash funds
- <sup>13/</sup> Includes \$50,000.00 cash funds

## Nebraska Resources Development Fund

Assist with the Development and Wise Use of Nebraska's Land and Water Resources

### PROJECT STATUS

As of June 30, 1998, a total of 45 projects that received financial assistance from the Resources Development Fund have been completed. Two other funded projects (School Creek and Dasher) were terminated by their sponsor prior to land rights acquisition due to unanticipated cost increases.

It is estimated that **approximately \$491,612,000 in benefits** will accrue from the funded projects during their project life periods (*generally 50 years*). These benefits can be separated into three general categories:



Flood Control/Erosion and  
Sediment Control-  
\$311,100,000  
(63%)

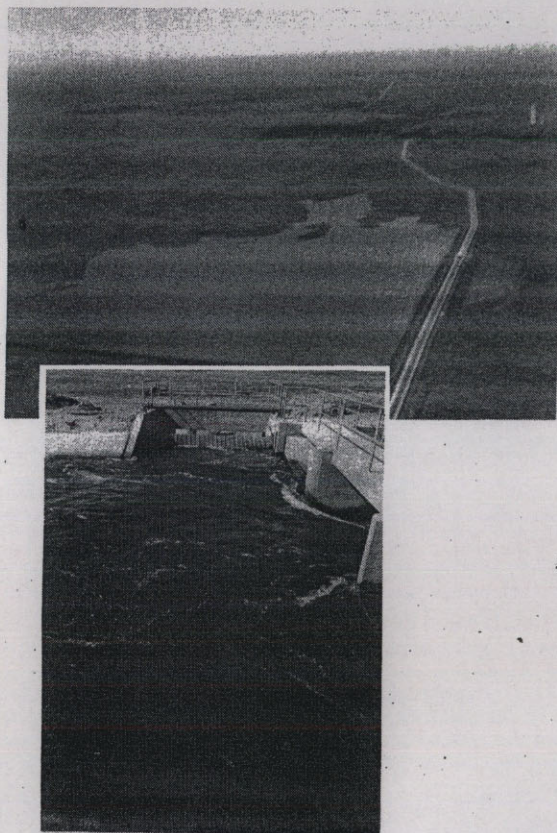
Recreation/Fish  
and Wildlife-  
\$124,600,000  
(26%)

Groundwater Recharge/  
Irrigation Water  
Management-  
\$55,800,000  
(11%)

Brief descriptions of the completed and currently approved Nebraska Resources Development Fund projects follow:



**COMPLETED RESOURCES DEVELOPMENT FUND PROJECTS**



*The Ainsworth Reservoir Project near Johnstown provided for improved water management.*

**1. AINSWORTH RESERVOIR**

**Sponsor: Ainsworth Irrigation District**

Ainsworth Reservoir was constructed approximately four miles southwest of Johnstown as an additional feature of the Ainsworth Irrigation Project. The reservoir serves as a secondary storage reservoir for irrigation water in the Ainsworth Canal that is not needed following unexpected rainfall events. Principally funded by the Rural Clean Water Program (RCWP), the project provides for improved water management and results in reduced pumping costs for district cooperators. The project also serves to improve water quality in Long Pine Creek, Plum Creek, and Sand Draw. Completed in 1987, this project was awarded a NRDF grant of \$30,862.50.

**2. ANTELOPE CREEK (Chalkrock Lake)**

**Sponsor: Lewis & Clark NRD**

The Antelope Creek Project involved the construction of an earthen dam on Antelope Creek in northwestern Cedar County. The structure has a permanent pool of 44 acres and provides both flood protection and recreational benefits. Due to Antelope Creek's excellent water quality and perennial flow, the reservoir supports a fine sport fishery. This project was completed in 1987 and received a NRDF grant of \$377,578.72.

**3. AOWA CREEK (Buckskin Hills)**

**Sponsor: Lewis & Clark NRD**

This project involved structure 6-7A of the Aowa Creek P.L. 566 Watershed Project, which was planned as a multi-purpose structure and include provisions for flood control, grade stabilization, and fish and wildlife. The structure is located about four miles southwest of Newcastle and has a conservation pool of 75 acres. This project utilized a NRDF grant of \$144,650.00 and was completed in 1979.

**4. AURORA 35-11-6 (Pioneer Trails)**

**Sponsor: Upper Big Blue NRD**

This project involved the construction of a dam on a tributary of Lincoln Creek northeast of Aurora. The resulting reservoir was designed to have a conservation pool of approximately 40 acres and provides both recreation and groundwater recharge benefits. A NRDF grant of \$335,364.17 was awarded to this project and it was completed in 1987. Recreational use has been less than anticipated due to excessive seepage and high turbidity in the reservoir.

### **5. BIG PAPIO CHANNEL**

**Sponsor: Papio-Missouri River NRD**

The Big Papio Channel Project is a Corps of Engineers Section 205 flood control project in Omaha along Big Papillion Creek between Center and "L" Streets. The project included channel improvement work, improved flow conveyance at a Union Pacific Railroad bridge, and construction of a flood warning system along with a hiking and biking trail. The project was completed in 1995 and received a NRDF grant of \$2,224,677.53.

### **6. BIG SANDY #1**

**Sponsor: Little Blue NRD**

Big Sandy #1 was the first of seven potential structures to be constructed in the Big Sandy Creek Watershed. The project, located on the U.S.D.A. Meat Animal Research Center west of Clay Center, consists of a floodwater retarding and groundwater recharge structure with a conservation pool of 330 acres. Groundwater recharge has been monitored at the reservoir. A NRDF grant of \$396,573.82 was used in the construction of this project which was completed in 1982.

### **7. BIG SANDY #2**

**Sponsor: Little Blue NRD**

Big Sandy #2, the second of seven potential structures in the Big Sandy Creek Watershed provides groundwater recharge along with flood control and fish and wildlife habitat. The structure is located approximately four miles northeast of Bruning on a tributary of Dry Sandy Creek. Its reservoir has a conservation pool of 250 acres and a flood pool of 560 acres. This project utilized a NRDF grant of \$864,603.43 and was completed in 1985. In 1988 the project sponsor designated the project a public use area.

### **8. BUFFALO CREEK**

**Sponsor: Central Platte NRD**

The Buffalo Creek Watershed Project consists of several flood water retarding structures in the uplands north of Lexington. The major purpose of the project is to provide flood protection for the lowland areas of the watershed. The structures also provide fish and wildlife, recreation, and groundwater recharge benefits. The design for Structure B-1 was altered to add a canal from an existing irrigation canal in order to improve its groundwater recharge capability. Completed in 1991, the project received a NRDF grant of \$2,145,637.80.

### **9. BUFFALO CREEK**

**Sponsor: Papio-Missouri River NRD**

The Buffalo Creek Watershed Project in Sarpy County consists of 10 structures. The primary purpose of the project is to provide grade stabilization and erosion control. Reduction of flood damages and improvement of water quality are secondary purposes. The project was awarded a NRDF grant \$628,712.63 and was completed in 1991.

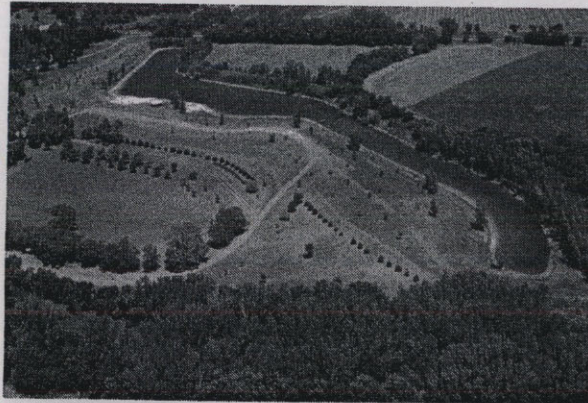


*Big Sandy #1 Project near Clay Center provides both groundwater recharge and flood control benefits.*

## 10. CENTRAL BUTLER WATER MANAGEMENT PROJECT

**Sponsor: Lower Platte North NRD**

The primary purposes of the Central Butler Water Management Project are to reduce flooding and improve surface water drainage near David City. The project included the construction of two earthen dams, the construction and improvement of drainage ditches, and the installation of certain storm sewers in David City. Completed in 1986, the project utilized a NRDF grant of \$446,604.45.



*Crystal Lake is a popular RV camping site located near Ayr.*

## 11. CHALCO HILLS RECREATION AREA

**Sponsor: Papio-Missouri River NRD**

The Chalco Hills Recreation Area (Papio Site #20) Project provided for outdoor recreation facility development and limited land acquisition at the Corps of Engineers' structure site located along I-80 in Sarpy County. The recreation area was opened to the public on August 1, 1988. The Commission approved funding for the project over a 10-year period with the sponsor requesting funds each fiscal year. The NRDF grant for this project totaled \$942,358.95.

## 12. CLATONIA CREEK

**Sponsor: Lower Big Blue NRD**

Located one mile north of Clatonia, this project involved the acquisition of 155 acres and the development of recreation facilities and fish and wildlife features at a Natural Resources Conservation Service P.L. 566 Watershed multi-purpose structure. The resulting reservoir has a surface area of approximately 46 acres. NRDF assistance was in the form of a grant for \$162,750.00 and the project was completed in 1981. High turbidity in the reservoir has held down recreational use at the site.

## 13. CLEAR CREEK WATERSHED

**Sponsor: Central Platte NRD**

Completed in 1981, this flood control project consists of six flood water retarding structures located in northern Polk County. The reservoirs also provide sediment control and water for livestock. Total NRDF assistance was \$343,126.91 in the form of a grant.

## 14. CRYSTAL LAKE

**Sponsor: Adams County**

This project, which was completed in 1980, consisted of the renovation of a run-down public recreation area along the Little Blue River near Ayr. The deepening and enlargement of a small oxbow lake was the major feature of the project. Two rock shelters and a change house were also renovated. NRDF assistance was \$67,806.83 in the form of a grant. The Nebraska Game and Parks Commission manages this site as a state recreation area.

## 15. CUB CREEK

**Sponsor: Middle Niobrara NRD**

This project, completed in 1979, was developed in conjunction with the improvement of Highway 12 west of Springview. The road structure impounds a 33-acre lake that provides recreation opportunities and fish and wildlife habitat. NRDF assistance was \$87,489.83 in the form of a grant.

*Assist with the Development and Wise Use of Nebraska's Land and Water Resources*

## **16. CZECHLAND LAKE**

**Sponsor: Lower Platte North NRD**

The Czechland Lake Project provided for recreation facility development at a P.L. 566 watershed flood control structure (Cottonwood Creek 7-A) near Prague. Designed and principally funded by the Natural Resources Conservation Service, the structure resulted in a 85-acre reservoir. The project was completed in 1993 and utilized a NRDF grant of \$172,990.57.

## **17. DAVIS CREEK**

**Sponsor: Lower Loup NRD**

The Davis Creek Reservoir Project consisted of the development of recreation facilities at a U.S. Bureau of Reclamation reservoir. Located southwest of Scotia, the Davis Creek Reservoir stores water for the lower portion of the North Loup Irrigation Project. Facility developments include a boat ramp and fishing pier, both designed to operate with the fluctuating nature of the reservoir, along with a picnic shelter, water well, rest rooms, and parking areas. A NRDF grant of \$96,038.86 was awarded to this project.

## **18. DESHLER**

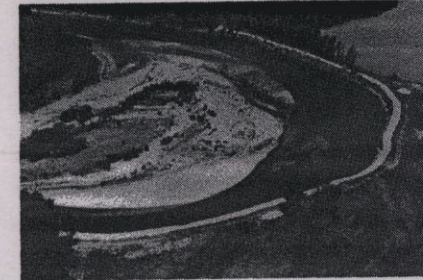
**Sponsor: Little Blue NRD**

The Deshler Flood Control Project called for the construction of an earthen dam just west of Deshler. The structure was to provide flood control benefits to the southern part of the community and the resulting reservoir was to provide various recreational opportunities. The reservoir was planned to have a conservation pool of 122 acres and a flood pool of 333 acres. The project was suspended in 1985 due to an increase in estimated land rights costs and the potential for excessive seepage from the reservoir. A total of \$21,639.75 in NRDF funds was expended for engineering and land rights appraisals.

## **19. ELKHORN RIVER BANK STABILIZATION**

**Sponsor: Papio-Missouri River NRD**

The Elkhorn River Bank Stabilization Project involved a channel cut-off and the placement of rock revetment at severely eroding sites along the seven-mile reach between King Lake and Highway 36 north of Waterloo. The project was designed to control rapidly advancing meanders, thereby preventing the erosion of cropland, woodland, and some residential property. NRDF funding was contingent upon acceptance of the assessment schedule for the Improvement Project Area (IPA) by the involved landowners. The project was completed in 1988 and utilized a NRDF grant of \$1,164,964.66 and a loan of \$135,741.15. The NRD made its final loan payment to the Commission in 1998.



*The Elkhorn River Bank Stabilization Project included a public recreation area north of Waterloo.*

## **20. HOWELLS LEVEE**

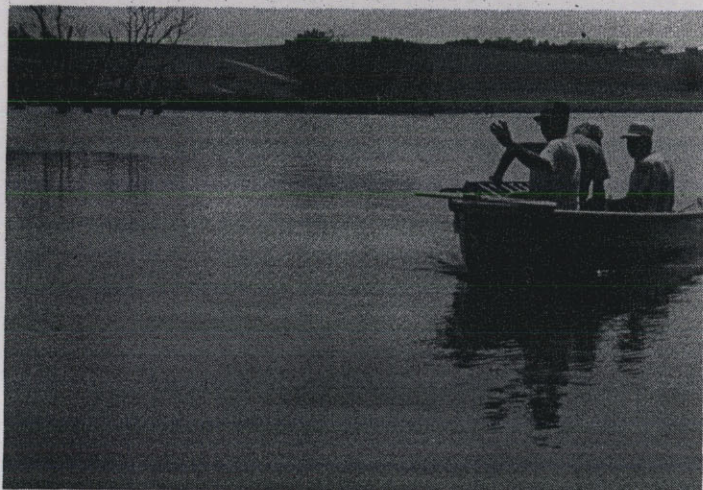
**Sponsor: Village of Howells**

This project, planned, designed, and principally funded by the Corps of Engineers under Section 205, provides the Village of Howells with 500-year flood protection along the East Fork of Maple Creek. The project consists of the improvement of an existing levee on the north side of town and construction of a new levee on the east side of the community. The project was completed in 1997 with a NRDF grant of \$145,155.34.

## **21. LIBERTY CREEK (Liberty Cove)**

**Sponsor: Little Blue NRD**

The Liberty Creek Project is a recreation and flood control project located southwest of Lawrence. The 36-acre reservoir provides for various recreation activities, including swimming and fishing. The structure also provides some flood protection to downstream roads and bridges and agricultural land. Completed in 1991, this project received a NRDF grant of \$223,162.50.



*The Maskenthine Project was the first to be funded through the Nebraska Resources Development Fund.*

### 23. LONG BRANCH

(Kirkman's Cove)

**Sponsor: Nemaha NRD**

Long Branch Site 21 is the designated multi-purpose structure in the Long Branch Watershed. The project site consists of 511 acres located approximately two and one half miles northwest of Humboldt. The structure was constructed on Kirkham Creek and the resulting reservoir has a conservation pool of 160 acres. The project provides flood control, grade stabilization, recreation, and fish and wildlife habitat benefits. The project utilized a NRDF grant of \$441,379.33 and was completed in 1988.

### 24. LOOMIS PIPELINE

**Sponsor: Central Nebraska Public Power and Irrigation District and the Village of Loomis**

Located at Loomis, this project involved the enclosing of a portion of an open irrigation lateral in buried pipe. Improved water conveyance and protection of the health, safety, and general welfare of Loomis residents resulted from the project. A NRDF grant for \$33,750.00 was utilized and the project was completed in 1981.

### 25. LOST CREEK

**Sponsor: City of Columbus**

Completed in 1986 the Lost-Creek Flood Control Project consists of an excavated floodway and a training levee that intercept storm runoff west and north of Columbus and convey it to the Loup Power Canal. The project, which will handle a 100-year flood, was designed and primarily funded by the Corps of Engineers. The NRDF provided a grant of \$465,823.57 and a loan of \$155,274.48. In 1995 the City of Columbus retired the NRDF loan for the project.

### 26. MASKENTHINE

**Sponsor: Lower Elkhorn NRD**

This project, the first to be funded through the Nebraska Resources Development Fund, is located approximately one mile north of Stanton on Maskenthine Creek. The 94-acre reservoir provides flood control, fish and wildlife habitat, sediment control, and recreational opportunities. Financial assistance in the form of a grant of \$269,978.98 was provided by the NRDF and the project was completed in 1976. The NRD has constructed additional facilities at the site in recent years.

### 22. LODGEPOLE CREEK AT SIDNEY

**Sponsor: City of Sidney**

This Corps of Engineers' Section 205 project consists of channel improvement work on Lodgepole Creek and Deadwood Draw in Sidney along with a channel cut-off and an accompanying grade stabilization structure and the replacement of three city bridges. The project will reduce flooding in Sidney and nearly confine the 100-year flood plain to the improved stream channel. The project was completed in the spring of 1994 and a NRDF grant of \$1,002,862.97 was awarded.

Assist with the Development and Wise Use of Nebraska's Land and Water Resources

**27. McCOOK (Kelley Canyon)**  
**Sponsor: Middle Republican NRD**

The NRDF provided a grant of \$512,000.00 for this flood control project in the northern part of McCook. The construction of a flood water retarding structure, drainage way improvement, and bridge replacement are the main features of this project that was completed in 1981.

**28. MILL CREEK**  
**Sponsor: Lower Platte South NRD**

The Mill Creek Project is a flood control project in Louisville that involved the construction of a bypass for Mill Creek flood flows along Highway 50, bridge clean-out work, and the enlargement of an existing berm. The project was completed in 1990 and was awarded a NRDF grant of \$66,850.03.

**29. MIRA CREEK**  
**Sponsor: Lower Loup NRD**

This clearing and snagging project was carried out to improve the channel capacity of Mira Creek adjacent to the Village of North Loup in order to reduce flooding in that community. The project also included the replacement of an irrigation lateral flume with a siphon. A NRDF grant of \$68,952.41 was awarded and the project was completed in 1985.

**30. MOORES CREEK**  
**Sponsor: Central Platte NRD**

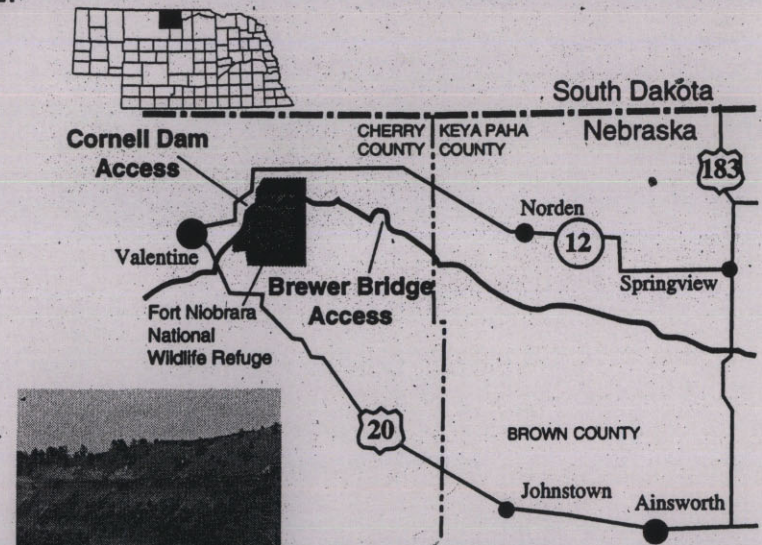
The Moores Creek Project is a flood control project near Grand Island that consisted of channel improvement work and the development of small flood water retention/detention cells along the stream. The project also utilized a large detention cell constructed by the Nebraska Department of Roads in its Highway 281 improvement project. Construction of the project was completed in 1995 with NRDF grant assistance totaling \$1,931,670.22.

**31. NIOBRARA RIVER ACCESS**  
**Sponsor: Middle Niobrara NRD**

The Niobrara River Access Project provided for the development of one public access site along the Niobrara River east of Valentine and the expansion of another. The Brewer Bridge site includes a restroom, a well, picnic tables, trash receptacles, a parking area, and a canoe access point. The facilities at the Cornell Bridge access site were enlarged and improved. Completed in 1991, the project received a NRDF grant of \$25,274.51.

**32. OGALLALA**  
**Sponsor: City of Ogallala**

The Ogallala Project consisted of the reconstruction of two existing dams located on the north side of Ogallala to meet "high hazard" engineering standards. Urban stormwater facilities, consisting of trunk lines and collectors and associated outfalls to the South Platte River were also constructed in order to attain comprehensive control of stormwater in the city. The project was awarded a NRDF grant of \$600,793.23 and was completed in 1990.



The Niobrara River Access Project is used by over 30,000 canoeists and tubers annually.



Oliver Reservoir is a popular recreation area in western Nebraska near Kimball.



### 33. OLIVER RESERVOIR

**Sponsor: South Platte NRD**

The Oliver Reservoir Project involved the reconstruction of an existing dam on Lodgepole Creek that was built in 1912 to store water for irrigation. The project, located west of Kimball, includes extensive recreational development around the 280-acre reservoir. The structure also provides flood control benefits. Completed in 1985, the project utilized a NRDF grant of \$1,008,476.54. The Nebraska Game and Parks Commission manages this site as a state recreation area.

### 34. PRAIRIE CREEK

**Sponsor: Central Platte NRD**

This project involved snagging and clearing operations to provide a more open floodway along the 42-mile reach of Prairie Creek in Hall County. The project utilized a NRDF grant of \$243,975.00 and was completed in 1980.

### 35. RAWHIDE CREEK

**Sponsor:  
Lower Platte North NRD**

The Rawhide Creek Flood Control Project, located north and west of Fremont, was designed to reduce flood problems in that city. The project consisted of (1) the construction of a flood control dam and reservoir on Trouble Creek, (2) the construction of three channels to divert flood water from Rawhide Creek, and (3) improvement of an existing drainage ditch to convey flood water to the Elkhorn River. The project was completed in 1994 and received a NRDF grant of \$2,251,337.08.

### 36. SCHOOL CREEK

**Sponsor: Upper Big Blue NRD**

The School Creek Project was proposed to provide groundwater recharge, flood control, sediment and erosion control, and recreation benefits. Dam Site #3, located north of Sutton, was to be the first structure to be constructed in the School Creek Watershed. It was to have a permanent pool of 160 acres but was suspended by the project sponsor in 1982 due to unanticipated costs that made the project economically infeasible. A total of \$45,724.71 in NRDF funds were expended for engineering and land rights appraisals.

### 37. SCRIBNER LEVEE

**Sponsor: City of Scribner**

The Scribner Levee Project consisted of the construction of a levee on the northwest, west, south, and southeast sides of Scribner to protect the city from Pebble Creek flooding. The project, designed and primarily funded by the Corps of Engineers as a Section 205 project, provides 100-year flood protection to Scribner. The project, as originally designed, was completed and an additional levee was constructed on the east side of the city to protect Scribner from the 100-year flood of the Elkhorn River. A NRDF grant of \$426,433.81 was awarded and the project was completed in 1995.

*Assist with the Development and Wise Use of Nebraska's Land and Water Resources*

### **38. SILVER CREEK**

**Sponsor: Central Platte NRD**

The Silver Creek Flood Control Project consists of an excavated floodway along Silver Creek and Clarks Drain in Merrick County. The project is designed to convey runoff water from agricultural land in the area. Reduced flooding and improved crop production have resulted from the project. Completed in 1987 the project received a NRDF grant of \$2,307,175.53. As a result of project construction, the base flow of Silver Creek has increased and the stream has formed new meanders within the floodway.

### **39. SOUTH FORK 2-A**

**Sponsor: Nemaha NRD**

Structure 2-A of the P.L. 566 South Fork Watershed Project is the designated multi-purpose structure in the watershed. The project provides flood control, sediment and erosion control, wildlife habitat and recreation benefits. The site consists of 360 acres and the structure has a conservation pool of 85 acres. The project is located near DuBois in the southeastern part of the state where little water-based recreation is available. The project was awarded a NRDF grant of \$266,632.71 and was completed in 1986.

### **40. SUMMIT LAKE**

**Sponsor:  
Papio-Missouri River NRD**

Summit Lake (Structure 5-A) of the P.L. 566 Tekamah-Mud Creek Watershed Project is the designated multi-purpose structure in the watershed. The project provides flood control benefits to the City of Tekamah and to agricultural land and also water-based recreation to a region of the state that includes the Omaha metropolitan area. The project, which utilized a NRDF grant of \$329,191.05, encompasses 400 acres, including the reservoir's conservation pool of 190 acres. The project was completed in 1982. The Nebraska Game and Parks Commission manages this site as a state recreation area.

### **41. THOMPSON CREEK**

**Sponsor: City of LaVista**

This project resulted in the construction of a floodwater retarding structure in the City of LaVista that provides flood protection to homes that were constructed prior to the adoption of the city's floodplain ordinance. The structure, which is designed to drain down slowly after storm events, was completed in 1986. A NRDF grant of \$240,581.72 was provided to this project.



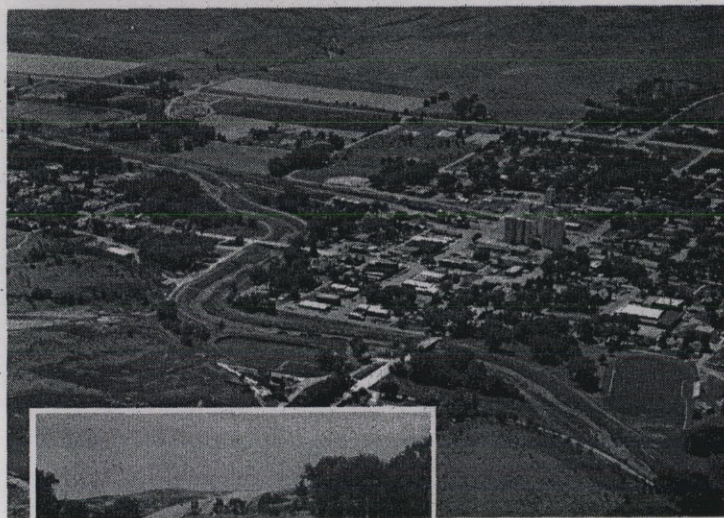
*The South Fork 2-A Project is a multi-purpose P.L. 566 site located near DuBois.*

### **42. UNION IRRIGATION DISTRICT REHABILITATION**

**Sponsor: Union Irrigation District & North Platte NRD**

The Union Irrigation District Rehabilitation Project provided for the rehabilitation of the irrigation district's water delivery system as earthen laterals were replaced with underground PVC pipe. Planned and designed by the NRCS as a RC&D project, the project was completed in 1989 and was awarded a NRDF loan of \$82,500.00.





The Wauneta Project utilized channel improvement work to provide flood protection to Wauneta.

#### 44. WARM SLOUGH/TROUBLE CREEK

**Sponsor: Central Platte NRD**

The Warm Slough/Trouble Creek Project is a flood control project that provides 100-year flood protection to Central City. The project consists of a diversion structure and channel that intercept flood flows in Warm Slough and in Trouble Creek above Central City and convey them to the Platte River. The project was awarded a NRDF grant of \$1,535,417.70 and was completed in 1994.

#### 46. WEST SAND DRAW

**Sponsor: Middle Niobrara NRD**

This project, which was completed in 1981, involved the construction of an earthen dam on Brown County road right-of-way northwest of Ainsworth. The structure traps sediment which otherwise would be carried down to Plum Creek, a cold water tributary of the Niobrara River. The project, which also provides grade stabilization and an improved road crossing, utilized a NRDF grant of \$36,364.91.

#### 47. WILLOW CREEK

**Sponsor: Lower Elkhorn NRD**

The Willow Creek Project, located southwest of Pierce, is primarily a water storage, recreation, and fish and wildlife enhancement project. The project area includes approximately 1,700 acres and the 700-acre reservoir provides a variety of water-based recreation opportunities. The project, which was completed in 1986, also provides limited flood control benefits. The project was awarded a NRDF grant of \$3,828,455.53. The Nebraska Game and Parks Commission manages this site as a state recreation area.

#### 43. WALNUT CREEK

**Sponsor: Lower Big Blue NRD**

The Walnut Creek Flood Control Project consists of four structures and is the first NRDF project that was developed as a watershed plan. The structures are located east and north of Crete and provide recreation (Site 2) and grade stabilization as well as flood control benefits. The structures have conservation pools ranging from 16 to 26 acres. The project was completed in 1982 and NRDF assistance totaled \$264,225.00 in the form of a grant.

#### 45. WAUNETA

**Sponsor: Village of Wauneta & Upper Republican NRD**

The Wauneta Flood Control Project consists of realignment and enlargement of the Frenchman Creek channel and the replacement of two bridges. The project provides flood control benefits to the Village of Wauneta. The project as constructed is a revision of the originally planned project that consisted of the construction of flood control structures on selected tributaries of Frenchman Creek above Wauneta. High land rights and construction costs necessitated modification of the original plan. The project was completed in 1986 and involved a NRDF grant of \$556,084.19.

APPROVED PROJECTS

**48. ENDERS DAM**

**Sponsor: Frenchman Valley and Hitchcock & Red Willow Irrigation Districts**

The Enders Dam Project will provide for the installation of drains to correct excessive seepage in Enders Dam, located on Frenchman Creek near Imperial. The project will be principally funded by the Bureau of Reclamation and design work is underway. Due to a revised cost estimate, however, Congressional reauthorization of the project is needed.

**49. GERING CANAL**

**Sponsor: Gering Irrigation District & North Platte NRD**

The Gering Canal Project consists of two phases to rehabilitate and improve the Gering Irrigation District's facilities. Phase One involved realigning the main canal to avoid canyon head-cutting while Phase Two involved construction of a new spillway. Phase Two will also reduce the potential for flooding in the City of Gering. The project was awarded a partial NRDF grant and a partial NRDF low interest rate loan for irrigation facility rehabilitation projects. The project will be completed in 1998.

**50. LOWER WOOD RIVER/UPPER WARM SLOUGH**

**Sponsor: Central Platte NRD**

Planned, designed, and principally funded by the Corps of Engineers as a general investigation type project, this project will provide flood protection against the 100-year flood event along the Wood River at Grand Island. Principal project features include minor levee and channel improvement work, a diversion on Wood River and a floodway to the Platte River. Design work is nearly completed and land rights acquisition is underway. Due to a revised cost estimate, however, Congressional reauthorization of the project is needed.

**51. PAPIO SITE 21**

**Sponsor: Papio-Missouri River NRD**

The Papio Site 21 Project is a recreation and flood control project located on Walnut Creek southwest of Papillion. The site was originally identified by the Corps of Engineers in its Papillion Creek Watershed Project. The project consists of an earthen dam that impounds a 100-acre reservoir on a 485-acre tract and extensive recreation facility development. The project will be completed in 1998.

**52. PENDER FLOOD CONTROL**

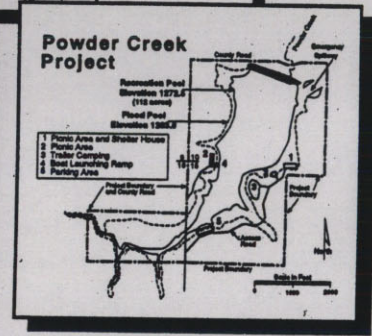
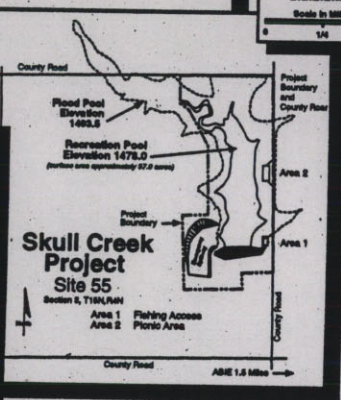
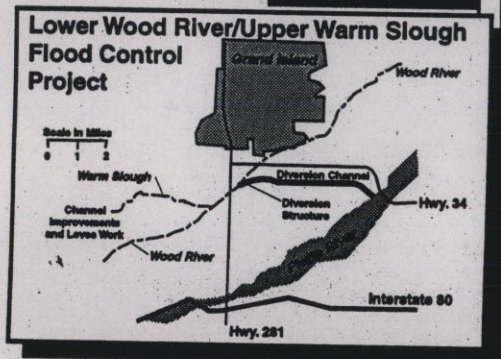
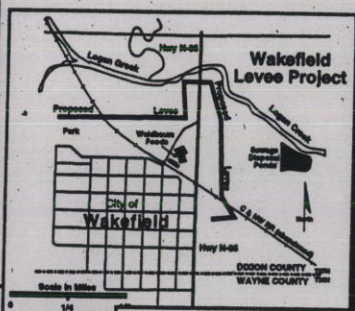
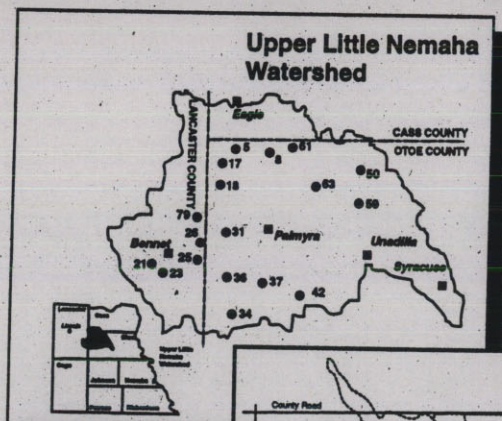
**Sponsor: Village of Pender**

This project is another Section 205 project planned, designed, and principally funded by the Corps of Engineers. The project will protect Pender from the 385-year flood event on Logan Creek and primarily consists of levee construction, including a floodwall section, two state highway closure structures, and a detention cell. Project construction began in the spring of 1998.

**53. POWDER CREEK**

**Sponsor: Lewis & Clark NRD**

The Powder Creek Project is a multi-purpose structure (Site 31-20A) in the Aowa Creek Watershed, a P.L. 566 project planned, designed, and principally funded by NRCS. The project will result in a 112-acre reservoir on 462 acres located southeast of Newcastle. The project will reduce the flooding of agricultural land and roads and bridges along with property in the city of Ponca. The recreational facilities at the site will complement Ponca State Park.



**54. SKULL CREEK SITE 55**  
**Sponsor: Lower Platte North NRD**

Skull Creek Site 55 is one of three floodwater retarding structures that, along with levee work, comprised the Skull Creek Watershed Project. Limited recreation facility development is planned for this multi-purpose structure site located north of Bruno. The reservoir will have a conservation pool of 37 acres on approximately a 200-acre site. The sponsor is working to increase land treatment in the watershed and design work may begin in 1998.

**55. UPPER LITTLE NEMAHA WATERSHED**  
**Sponsor: Nemaha NRD**

The Upper Little Nemaha Watershed Project is a flood control project that consists of 18 floodwater retarding structures. Originally planned by the Natural Resources Conservation Service as a P.L. 566 project, it is located in the Bennet, Eagle, Palmyra, and Unadilla area. Structure design, land rights acquisition and construction work are all underway and eight structures are either completed or nearing completion.

**56. WAKEFIELD LEVEE**  
**Sponsor: City of Wakefield**

The Wakefield Levee Project will provide 100-year flood protection to the City of Wakefield from flooding along Logan Creek. The project consists of a levee on the north and east sides of the community, a highway closure structure, and floodproofing of three city wells. The city has also applied to FEMA for funding through the Hazard Mitigation Grant Program (HMGP). If the project is approved for HMGP funding, the level of NRDF assistance will be reconsidered.

**57. WEEPING WATER CREEK WATERSHED**  
**Sponsor: Lower Platte South NRD**

The Weeping Water Creek Watershed Project is a flood control project located in Cass County. The project consists of 19 floodwater retarding structures that will serve to reduce flooding in the communities of Weeping Water, Nehawka, and Union, to agricultural land, and to roads and bridges. Sixteen structures have been completed and work is progressing on the other three.

A table regarding the financial status of the approved projects follows:

**FINANCIAL STATUS OF APPROVED PROJECTS**

June 30, 1998



**FINANCIAL STATUS OF APPROVED PROJECTS**

June 30, 1998

PROJECT NAME	AMOUNT ALLOCATED	AMOUNT OBLIGATED	AMOUNT EXPENDED TO DATE
<b>FULLY FUNDED:</b>			
Gering Canal	\$325,302.49	\$325,302.49	\$269,714.10
Papio Site 21	4,468,450.90	4,468,450.90	3,602,834.52
Pender Flood Control	913,293.00	913,293.00	367,916.28
<b>PARTIALLY FUNDED:</b>			
Lower Wood River/ Upper Warm Slough	\$3,553,721.02	\$1,442,587.83	\$ 161,023.29
Upper Little Nemaha	3,858,263.66	3,210,678.66	1,626,335.32
Weeping Water Creek	4,828,049.00	3,779,922.50	2,977,015.58
<b>APPROVED BUT NOT FUNDED:</b>			
Enders Dam	\$37,064.25	\$0.00	\$0.00
Powder Creek	453,671.40	0.00	0.00
Skull Creek	494,943.00	0.00	0.00
Wakefield Levee	719,838.00	0.00	0.00
<b>COMPLETED PROJECTS (45)</b>	<b>\$30,504,953.78</b>	<b>\$30,504,953.78</b>	<b>\$30,504,953.78</b>
<b>TOTAL:</b>	<b>\$50,157,550.50</b>	<b>\$44,645,189.16</b>	<b>\$39,509,792.87</b>

# Nebraska Resources Development Fund

Assist with the Development and Wise Use of Nebraska's Land and Water Resources

## PROJECTS PENDING

Project proposals for the following projects have been reviewed and the sponsors are continuing more detailed planning.

The **Gering Canal - Phase III Project** will serve to reduce flooding in the City of Gering that results from spillover from the Gering Canal following heavy rainfall events. The City of Gering will sponsor this project that is being planned by the Panhandle RC&D of Natural Resources Conservation Service (NRCS). The Lower Platte South NRD is sponsoring the **Stevens Creek Watershed Project**. Several small impoundments and an additional culvert to relieve flooding on the south side of Highway 6 are included in this project located just east of Lincoln. The Lower Platte South NRD is also planning to amend the **Weeping Water Creek Watershed Project** by developing structure 7g near Elmwood, the largest and last structure to be built in the project, into a multi-purpose site. Increased project costs for land rights and recreation facilities will result.

One other project proposal was received during the past year. The Village of Cedar Creek and the Lower Platte South NRD submitted a proposal for the **Cedar Creek Project** which called for construction of a levee along the Platte River to protect the village from flooding. After review by Commission staff and other state agencies, the Commission advised the sponsors not to proceed with an application and feasibility report, primarily due to design considerations. The sponsors are currently reevaluating the project.



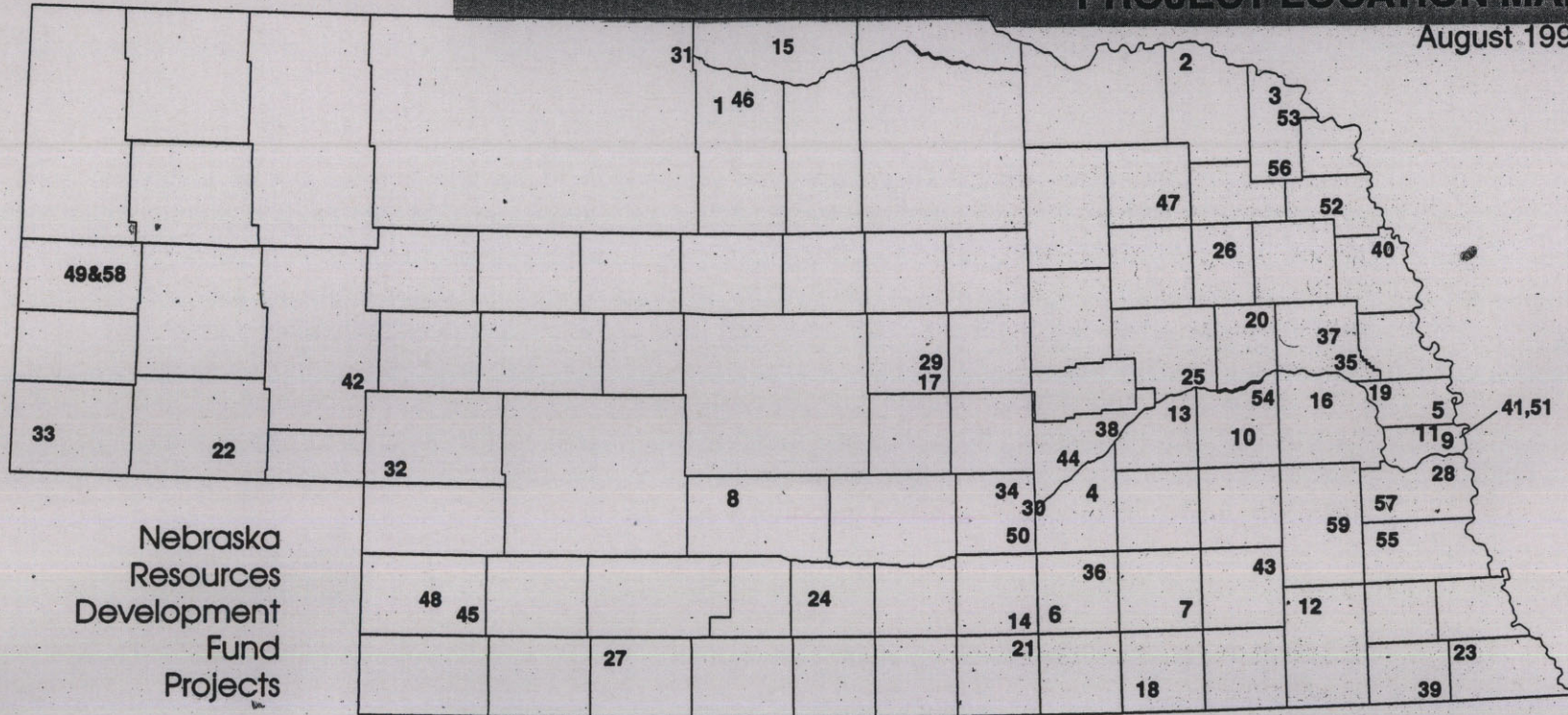
## ANTICIPATED NRDF FUNDING NEEDS Fiscal Years 1999-2000 AND 2000-01

PROJECT	FY 1999-2000	FY 2000-2001
<b>APPROVED PROJECTS</b>		
Enders Dam	\$0.00	\$37,064.25
Gering Canal	0.00	0.00
Lower Wood River/ Upper Warm Slough	1,009,781.40	1,009,781.40
Papio Site 21	0.00	0.00
Pender Flood Control	0.00	0.00
Powder Creek	295,425.00	66,824.00
Skull Creek Site 55	181,488.00	313,455.00
Upper Little Nemaha	647,585.00	0.00
Wakefield Levee	192,855.00	526,983.00
Weeping Water Creek	214,000.00	753,000.00
<b>SUBTOTAL:</b>	<b>\$2,541,134.40</b>	<b>\$2,707,107.65</b>
<b>PENDING PROJECTS</b>		
Gering Canal - Phase III	\$100,000.00	\$144,000.00
Stevens Creek	1,350,000.00	750,000.00
Weeping Water Creek Site 7g	1,200,000.00	750,000.00
<b>SUBTOTAL:</b>	<b>\$2,650,000.00</b>	<b>\$1,644,000.00</b>
<b>TOTAL:</b>	<b>\$5,191,134.40</b>	<b>\$4,351,107.65</b>

Assist with the Development and Wise Use of Nebraska's Land and Water Resources

## PROJECT LOCATION MAP

August 1998



Nebraska  
Resources  
Development  
Fund  
Projects

### COMPLETED PROJECTS

1. Ainsworth Reservoir
2. Antelope Creek
3. Aowa Creek
4. Aurora 35-11-6
5. Big Papio Channel
6. Big Sandy #1
7. Big Sandy #2
8. Buffalo Creek (Dawson Co.)
9. Buffalo Creek (Sarpy Co.)
10. Central Butler
11. Chalco Hills Recreation Area (Papio Site #20)
12. Clatonia Creek
13. Clear Creek Watershed
14. Crystal Lake
15. Cub Creek

16. Czechland Lake
17. Davis Creek Reservoir
18. Deshler
19. Elkhorn River Bank Stabilization
20. Howells Levee
21. Liberty Creek
22. Lodgepole Creek at Sidney
23. Long Branch
24. Loomis Pipeline
25. Lost Creek
26. Maskenthine Lake
27. McCook (Kelley Canyon)
28. Mill Creek
29. Mira Creek
30. Moores Creek
31. Niobrara River Access
32. Ogallala

33. Oliver Reservoir
34. Prairie Creek
35. Rawhide Creek
36. School Creek
37. Scribner Levee
38. Silver Creek
39. South Fork 2-A
40. Summit Lake
41. Thompson Creek
42. Union Irrigation District Rehabilitation
43. Walnut Creek
44. Warm Slough/Trouble Creek
45. Wauneta
46. West Sand Draw
47. Willow Creek

### APPROVED PROJECTS

48. Enders Dam
49. Gering Canal
50. Lower Wood River/Upper Warm Slough
51. Papio Site 21
52. Pender Flood Control
53. Powder Creek
54. Skull Creek Site 55
55. Upper Little Nemaha Watershed
56. Wakefield Levee
57. Weeping Water Creek Watershed

### PENDING PROJECTS

58. Gering Canal - Phase III
59. Stevens Creek

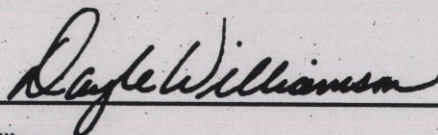
**LOOKING AHEAD**

The **Nebraska Resources Development Fund** has assisted Nebraskans with the proper development of the State's land and water resources since 1974. Local subdivisions of government throughout the state have demonstrated their capability to develop projects that address local natural resources problems and opportunities. In view of current budget constraints it has become almost essential for these entities to cooperate with local, state and federal agencies in order to secure adequate funding for their projects.

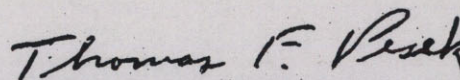
Flood control and/or recreation projects are expected to comprise most new applications in the coming years. In addition, increased demand on the Fund to assist with irrigation rehabilitation projects is anticipated. As can be seen in the preceding table, demands on the Fund are expected to continue to be strong:

**Submitted to The Governor and Legislature**

*August 1998*



Dayle E. Williamson  
Director of Natural Resources  
Nebraska Natural Resources Commission



Thomas F. Pesek  
Administrative Coordinator  
Nebraska Natural Resources Commission