

NEB-030.04

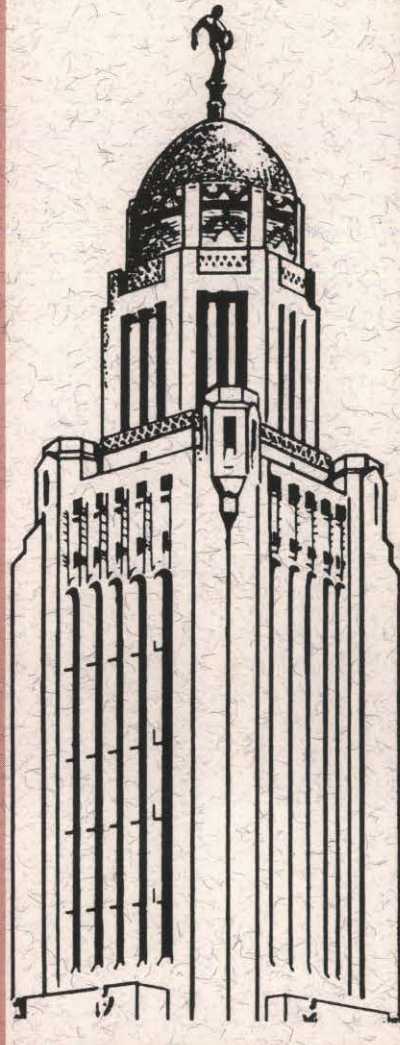
1990  
BIENNIAL REPORT to the  
GOVERNOR and LEGISLATURE

---

on the

---

NEBRASKA  
RESOURCES DEVELOPMENT  
FUND



Published by the Nebraska Natural Resources Commission  
September 1990

PRINTED ON RECYCLED PAPER





---

# NEBRASKA RESOURCES DEVELOPMENT FUND

---

## BIENNIAL REPORT

(July 1, 1988 - June 30, 1990)

### TO THE GOVERNOR AND THE LEGISLATURE

September 1990

---

---

## INTRODUCTION

---

The **Nebraska Resources Development Fund Act** of 1974 created a fund to assist in the development and wise use of Nebraska's water and land resources. The **Nebraska Resources Development Fund** can be used to provide grants and/or loans to political subdivisions of the state or an agency of the state, or it can be used by the Natural Resources Commission to acquire an interest in a project in the name of the state. The Act created a conjunctive administrative system with certain responsibilities delegated to the Natural Resources Commission, and other responsibilities delegated to a statutorily created "Advisory Board." On February 15, 1985, the Director of Natural Resources assumed the responsibilities and duties of the Advisory Board in accordance with the provisions of L.B. 1106.

The primary function of the Director is to determine project and program eligibility for Nebraska Resources Development Fund (NRDF) assistance. The Director must also determine the type of assistance appropriate: Grant, loan or a combination thereof. To accomplish these responsibilities, the Director has adopted appropriate rules and regulations, evaluation standards, specifications, and guidelines for implementation. The Director and his staff, along with personnel from other state agencies as appropriate, review each application and the Director must find that a project is economically, financially and technically feasible as well as environmentally acceptable in order for it to be eligible.

The Commission reviews project proposals and, after receiving recommendations from the Director, advises project sponsors whether to proceed with an application and feasibility report. The Commission's primary administrative functions begin once the Director has reviewed the application, determined eligibility, and referred those projects eligible to the Commission. Determination of funding priorities for eligible programs or projects is a sole responsibility of the Commission. Prior to any allocation of funds, the Commission must enter into an agreement and negotiate other necessary documents to be assured that the state investment is protected. Once this is accomplished, the Commission has responsibility for administering the grant and/or loan and for administering the repayment provisions of a loan.

The application procedure established jointly by the Director and the Commission is a two-step process. The first step involves the submittal of a project proposal by a sponsor, and the second step is a project application. A sponsor may bypass the project proposal and initiate the request by submitting an application; however, in such case the sponsor forfeits the possibility of cost-sharing on the cost of preparation of the application and accompanying feasibility study.

A set of "*Guidelines*" has been distributed for use by project sponsors in fulfilling the requirements of the "Project Proposal" and the "*Project Application and Feasibility Report*." The "Project Proposal" is a brief document which outlines the nature of the project, includes a preliminary estimate of project costs, and gives an indication of the sponsor's plans for the project. The Director, after reviewing the project proposal, recommends to the Commission whether the sponsor should proceed with an application and indicates the likely range of NRDF assistance if the project is later found to be eligible. The Commission may provide the sponsor with additional guidance regarding the contents of the application. This process helps ensure that a sponsor covers all areas of concern to the Director and Commission and prevents the inclusion and preparation of unnecessary material.



The application is to include the necessary project description, cost estimates, preliminary design information, description of the manner in which the project will be operated, as well as the statutorily required information to determine whether the project is financially, economically, and technically feasible and environmentally acceptable. If the Director determines a given project is financially, economically, and technically feasible and environmentally acceptable, as well as being an eligible project under the law, he in turn submits a recommendation, containing those findings, to the Commission. That recommendation also stipulates the type of assistance (grant and/or loan) and amount of assistance.

The Commission, at its first regularly scheduled meeting after the Director's recommendation is received, is briefed on all aspects of the project by the project sponsor and Commission staff members. Commission policy then provides that the project be automatically referred to its Program Committee for preparation of a recommendation to the Commission in regard to approval and obligation of funds, with such recommendation to be submitted at the subsequent Commission meeting. A delegation of Commission members must visit a project site before the Commission takes action.

Approval of any project by the Commission constitutes only acceptance or endorsement of the project and does not entitle the sponsor of that project to receive any money from the Development Fund. However, the obligation of funds does set aside a given amount of money for a project. After approving a project, the Commission may take action on "obligating" or "setting aside" funds for that project if funds are available. Such obligation may be for the entire project or only for an independent or separable component of a project. Additionally, separable components of larger projects may be designated even if the components are not independent of each other, if the project sponsor agrees to such designation. Commission rules and regulations also establish a priority setting system to allocate available funds among the eligible projects on an annual basis.



## NATURAL RESOURCES COMMISSION MEMBERS

Robert Gifford, *Chairman*  
Frank Bartak, *Vice-Chairman*  
Milton Fricke  
Dale Harlan  
Harold Janda  
David Jones  
Ralph Knobel  
Harold Kopf

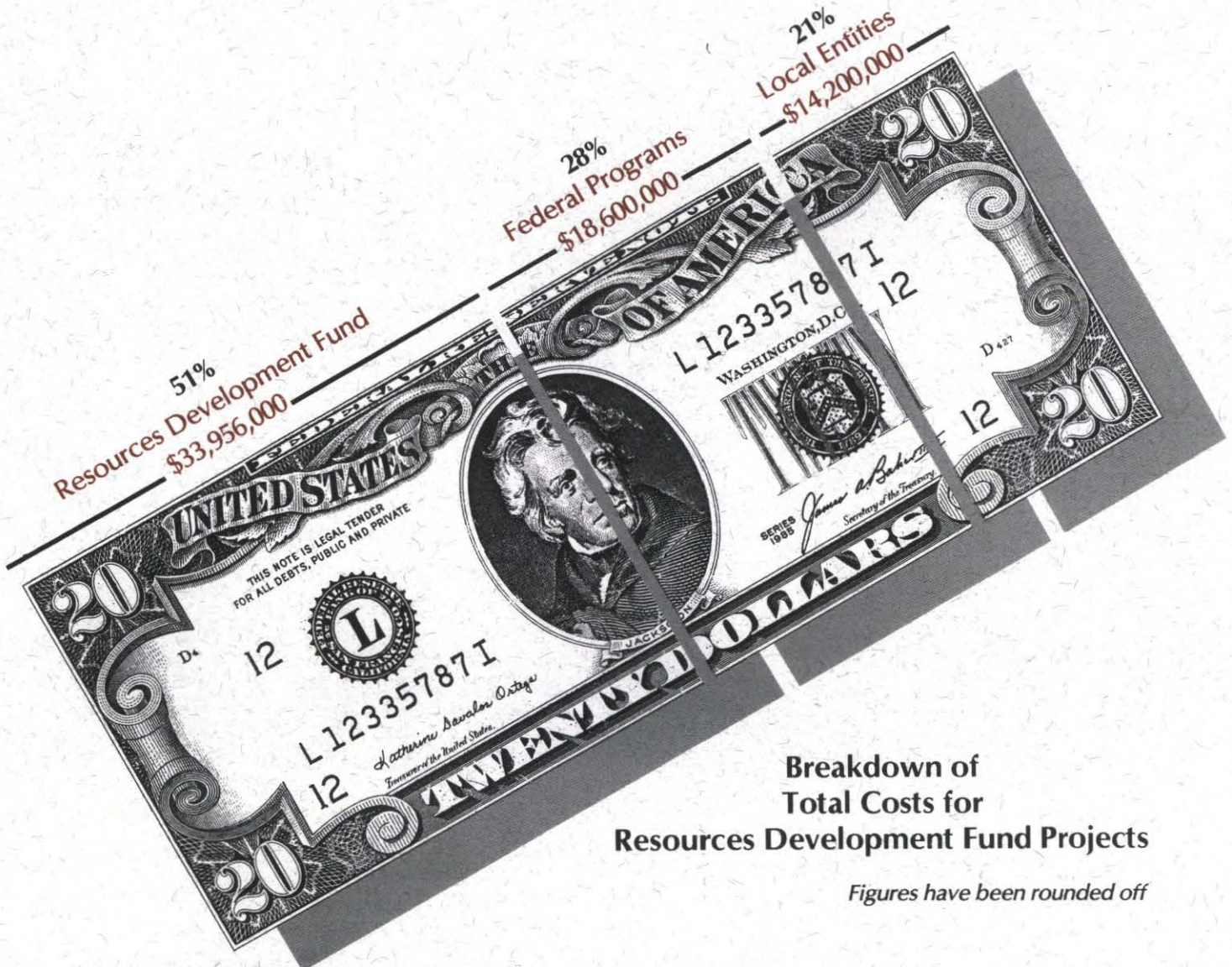
Vincent Kramper  
Donald Larson  
Robert Olson  
Donald Roberts  
Clinton VonSeggern  
Edward Schrock  
Clifford Welsh  
Robert Yost



## PROJECT REVIEW

As of June 30, 1990, **47 water resources projects** have been approved for financial assistance from the Resources Development Fund. The total allocation for these projects is **\$33,956,405.42**. The majority of the projects funded provide for the storage of water and the beneficial use(s) of that water. Flood control, sediment and erosion control, groundwater recharge, fish and wildlife enhancement, and recreation, including fishing, boating, and swimming, have been the primary benefits that have resulted. Several of the funded projects have dealt with the construction of dams that are part of the Soil Conservation Service's P.L. 566 Watershed Program or its Resource Conservation and Development (RC&D) Program. **During fiscal years 1989 and 1990, three projects were completed and six new projects were funded.**

The total cost of the 47 projects that have been approved for Resources Development Fund assistance is approximately \$67,000,000. Of this amount, the Development Fund has provided \$33,956,000 (51%), federal programs \$18,600,000 (28%) and local entities \$14,200,000 (or 21%).



**Breakdown of  
Total Costs for  
Resources Development Fund Projects**

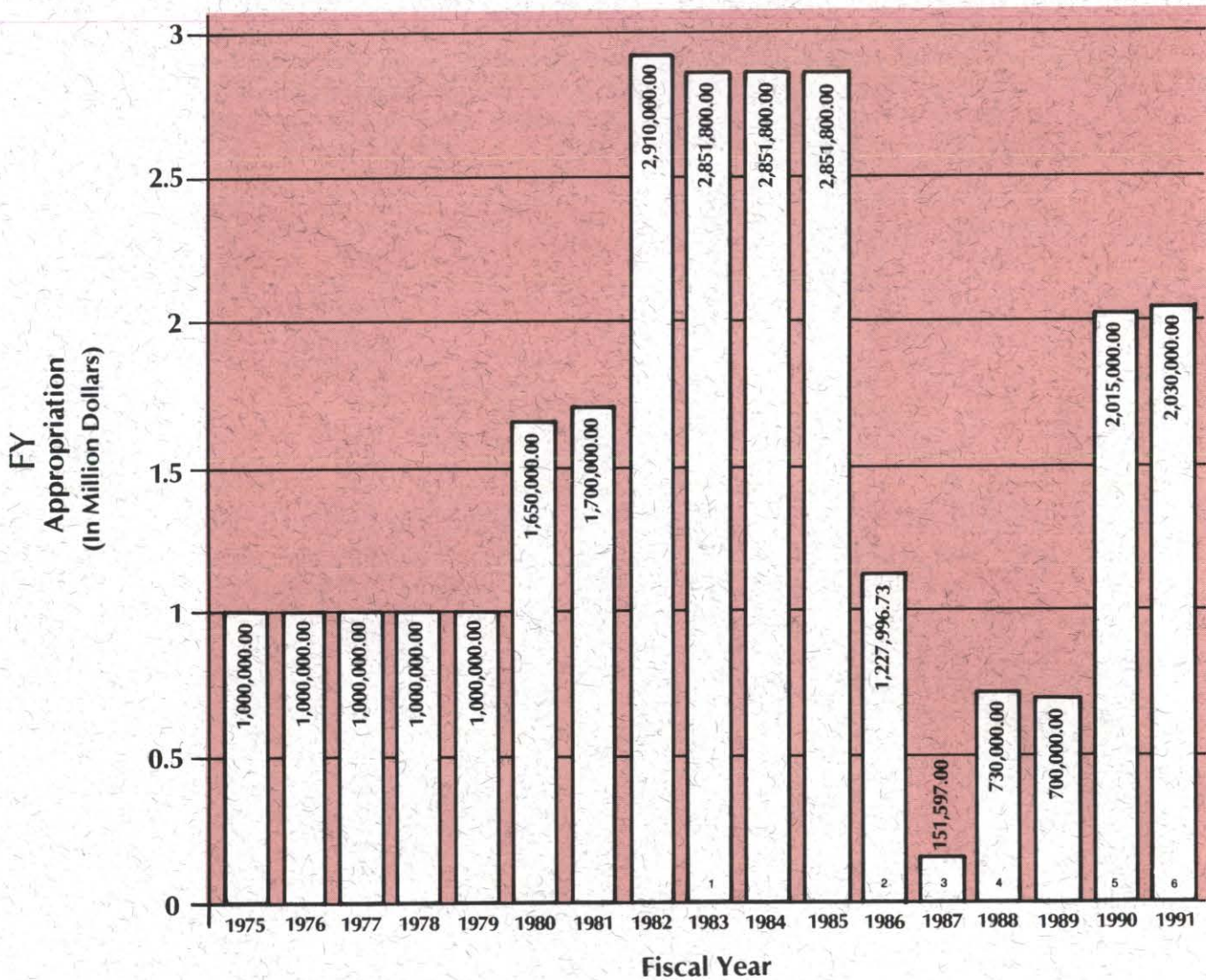
*Figures have been rounded off*



## RESOURCES DEVELOPMENT FUND FINANCIAL HISTORY

From its inception, the Resources Development Fund has depended upon general fund appropriations to provide state financial assistance to local project sponsors. The annual appropriations have been:

### Annual Appropriations



1 Includes \$100,000.00 cash funds

2 Includes \$69,000.00 transferred from Water Management Fund plus \$1,232.73 in operating funds

3 Includes \$50,000.00 cash funds

4 Includes \$30,000.00 cash funds

5 Includes \$15,000.00 cash funds

6 Includes \$30,000.00 cash funds

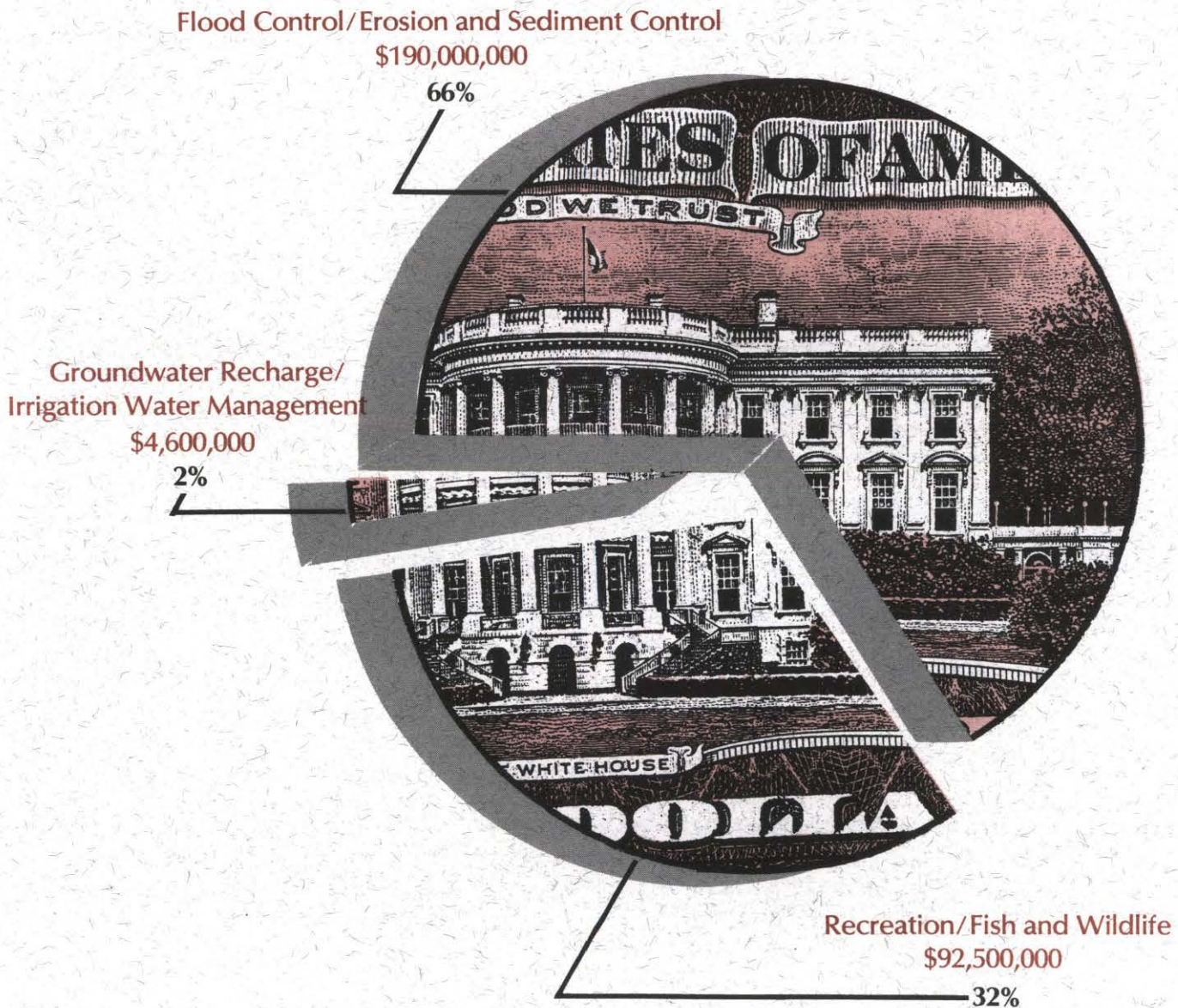
Total Annual Appropriations 1975-1991 equals \$26,669,993.73



## PROJECT STATUS

As of June 30, 1990, a total of **29 projects** that received financial assistance from the Resources Development Fund have been completed. Two other funded projects have been terminated by their sponsor prior to land rights acquisition due to unanticipated cost increases.

It is estimated that approximately **\$287,000,000 in benefits** will accrue from the funded projects during their project life periods (generally 50 years). These benefits can be separated into three categories:



Brief descriptions of the completed and currently approved projects follow:



## COMPLETED PROJECTS

### AINSWORTH RESERVOIR

Sponsor: Ainsworth Irrigation District

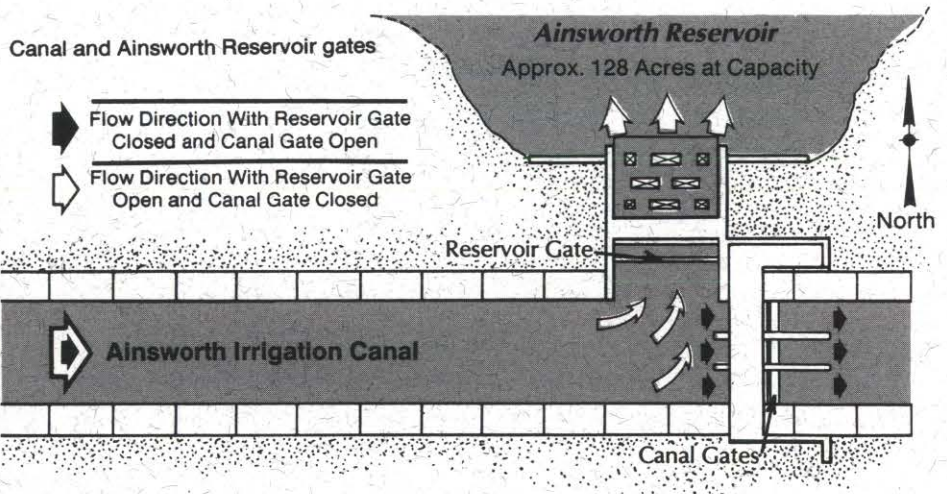
Ainsworth Reservoir was constructed approximately four miles southwest of Johnstown as an additional feature of the Ainsworth Irrigation Project. The reservoir serves as a secondary storage reservoir for irrigation water in the Ainsworth Canal that is not needed following unexpected rainfall events. Principally funded by the Rural Clean Water Program (RCWP), the project provides for improved water management and results in reduced pumping costs for district cooperators. Improved water quality is also expected in Long Pine Creek, Plum Creek, and Sand Draw. Completed in 1987, this project was awarded a NRDF grant of \$30,862.50.

*(see graphic and photo below)*

### ANTELOPE CREEK

Sponsor: Lewis & Clark NRD

The Antelope Creek Project involved the construction of an earthen dam on Antelope Creek in northwestern Cedar County. The structure has a permanent pool of 44 acres and provides both flood protection and recreational benefits. Due to Antelope Creek's excellent water quality and its perennial flow, the reservoir supports a fine sport fishery. This project was completed in 1987 and received a NRDF grant of \$377,578.72.



### AOWA CREEK (Buckskin Hills)

Sponsor: Lewis & Clark NRD

This project involved structure 6-7A of the Aowa Creek P.L. 566 Watershed Project, which was planned as a multi-purpose structure and includes provisions for flood control, grade stabilization, and fish and wildlife. The structure is located about four miles southwest of Newcastle and has a conservation pool of 75 acres. This project utilized a NRDF grant of \$144,650.00 for land acquisition and was completed in 1979.

### AURORA 35-11-6

Sponsor: Upper Big Blue NRD

This project involved the construction of a dam on a tributary of Lincoln Creek northeast of Aurora. The resulting reservoir has a conservation pool of approximately 40 acres and provides both recreation and groundwater recharge benefits. A NRDF grant of \$335,364.17 was awarded to this project and it was completed in 1987.



### **BIG SANDY #1** \_\_\_\_\_

Sponsor: Little Blue NRD

Big Sandy #1 is the first of seven potential structures to be constructed as part of the Big Sandy Creek Watershed. The project, located on the U.S.D.A. Meat Animal Research Center west of Clay Center, consists of a floodwater retarding and groundwater recharge structure with a conservation pool of 330 acres. Groundwater recharge has been monitored at the reservoir. A NRDF grant of \$396,573.82 was used in the construction of this project which was completed in 1982.

### **BIG SANDY #2** \_\_\_\_\_

Sponsor: Little Blue NRD

Big Sandy #2, the second of seven potential structures in the Big Sandy Creek Watershed, is designed to provide groundwater recharge along with flood control and wildlife habitat. The structure is located approximately four miles northeast of Bruning on a tributary of Dry Sandy Creek. Its reservoir has a conservation pool of 250 acres and a flood pool of 560 acres. This project utilized a NRDF grant of \$864,603.43 and was completed in 1985. In 1988 the project sponsor expanded the project by making it a public use area.

### **CENTRAL BUTLER WATER MANAGEMENT PROJECT** \_\_\_\_\_

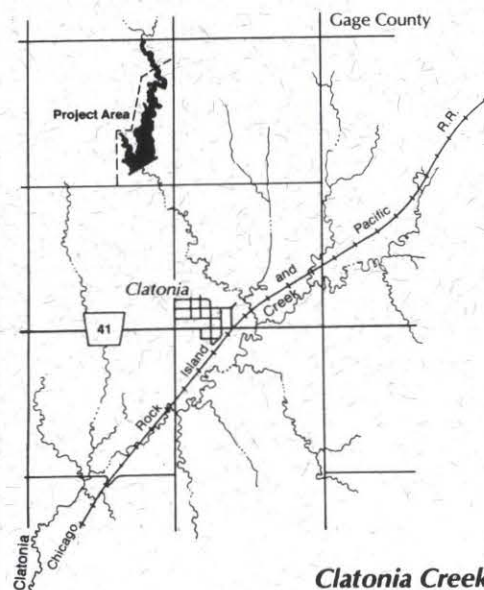
Sponsor: Lower Platte North NRD

The primary purposes of the Central Butler Water Management Project are to reduce flooding and improve surface drainage in the David City area. The project included the construction of two earthen dams, the construction and improvement of drainage ditches, and the installation of certain storm sewers in David City. Completed in 1986, the project utilized a NRDF grant of \$446,604.45.

### **CLATONIA CREEK** \_\_\_\_\_

Sponsor: Lower Big Blue NRD

Located one mile north of Clatonia, this project involved the acquisition of 155 acres and the development of recreation facilities and fish and wildlife features for a Soil Conservation Service P.L. 566 Watershed multi-purpose structure. The resulting reservoir has a surface area of approximately 46 acres. NRDF assistance was in the form of a grant for \$162,750.00 and the project was completed in 1981.



*Clatonia Creek*



### **CLEAR CREEK WATERSHED**

Sponsor: Central Platte NRD

Completed in 1981, this flood control project consists of six flood water retarding structures located in northern Polk County. The reservoirs also provide sediment control and water for livestock. Total NRDF assistance was \$343,126.91 in the form of a grant.

### **CRYSTAL LAKE**

Sponsor: Adams County/Little Blue NRD

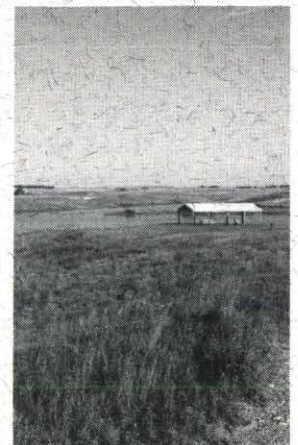
This project, which was completed in 1980, consisted of the renovation of an existing public recreation area along the Little Blue River near Ayr. The deepening and enlargement of an oxbow was the major feature of the project. NRDF assistance was \$67,806.83 in the form of a grant.

### **CUB CREEK**

Sponsor: Middle Niobrara NRD

This project, completed in 1979, was developed in conjunction with the improvement of Highway 12 west of Springview. The resulting road structure impounds a 33 acre lake that provides recreation opportunities and fish and wildlife habitat. NRDF assistance was \$87,489.83 in the form of a grant.

Cub Creek provides area residents with recreational opportunities.



*Cub Creek*

### **DESHLER**

Sponsor: Little Blue NRD

The Deshler Flood Control Project called for the construction of an earthen dam just west of Deshler. The structure was to provide flood control benefits to the southern part of the community and the resulting reservoir was to provide various recreational opportunities. The reservoir was planned to have a conservation pool of 122 acres and a flood pool of 333 acres. The project was suspended in 1985 due to an unanticipated increase in estimated project costs. A total of \$21,639.75 in NRDF funds was expended for engineering and land rights appraisals.

### **ELKHORN RIVER BANK STABILIZATION**

Sponsor: Papio-Missouri River NRD

The Elkhorn River Bank Stabilization Project involves a channel cut-off and the placement of rock revetment at severely eroding sites along the seven mile reach between King Lake and Highway 36 north of Waterloo. The project was designed to control rapidly advancing meanders, thereby preventing the erosion of cropland, woodland, and some residential property. NRDF funding was contingent upon acceptance of the assessment schedule for the Improvement Project Area (IPA) by the involved landowners and the Commission has decided not to fund any other similar project until this project has shown itself to be cost effective. The project was completed in 1988 and utilized a NRDF grant of \$1,164,964.66 and a loan of \$135,741.15.



### **LONG BRANCH**

Sponsor: Nemaha NRD

Long Branch (Site 21) is the designated multi-purpose structure in the Long Branch Watershed. The project site consists of 511 acres located approximately two and one half miles northwest of Humboldt. The structure was constructed on Kirkham Creek and the resulting reservoir has a permanent pool of 160 acres. The project provides flood control, grade stabilization, recreation, and wildlife habitat benefits. The project utilized a NRDF grant of \$441,379.33 and was completed in 1988. (see photo below)

### **LOOMIS PIPELINE**

Sponsor: Central Nebraska Public Power and Irrigation District and the Village of Loomis

Located at Loomis, this project involved the enclosing of a portion of an irrigation lateral in buried pipe. Improved water conveyance and protection of the health, safety, and general welfare of Loomis residents resulted from the project. A NRDF grant for \$33,750.00 was utilized and the project was completed in 1981.



Long Branch (Site 21) facilities received the help of many volunteers and donations of equipment and materials during construction. The Humboldt community also will receive economic benefits from the project.

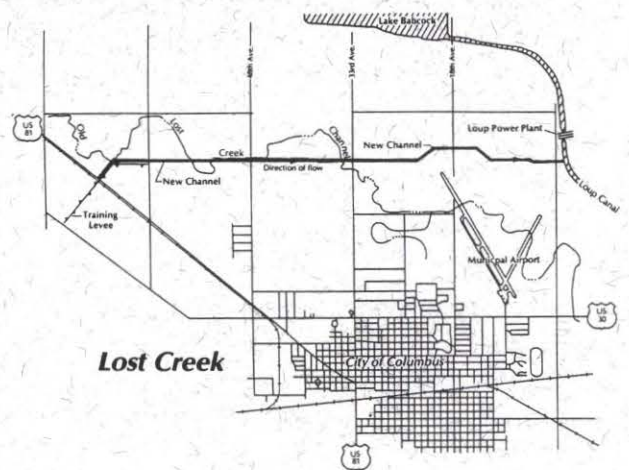


*Long Branch*

### **LOST CREEK**

Sponsor: City of Columbus

Completed in 1986 the Lost Creek Flood Control Project consists of an excavated floodway and a training levee that intercept storm runoff west and north of Columbus and convey it to the Loup Power Canal. The project, which will handle a 100-year flood, was designed and primarily funded by the Corps of Engineers. The NRDF provided a grant of \$465,823.57 and a loan of \$155,274.48 to the project.



*Lost Creek*

### **MASKENTHINE**

Sponsor: Lower Elkhorn NRD

This project, the first to be funded through the Nebraska Resources Development Fund, is located approximately one mile north of Stanton on Maskenthine Creek. The resulting 94 acre reservoir provides flood control, fish and wildlife habitat, sediment control, and recreational opportunities. Financial assistance in the form of a grant of \$269,978.98 was provided by the NRDF. The project was completed in 1976.



### **McCOOK (Kelley Canyon)**

Sponsor: Middle Republican NRD

The NRDF provided a grant of \$512,000.00 for this flood control project in the northern part of McCook. The construction of a flood water retarding structure, drainage way improvement, and bridge replacement are the main features in this project that was completed in 1981.

*(see photo below)*

### **MIRA CREEK**

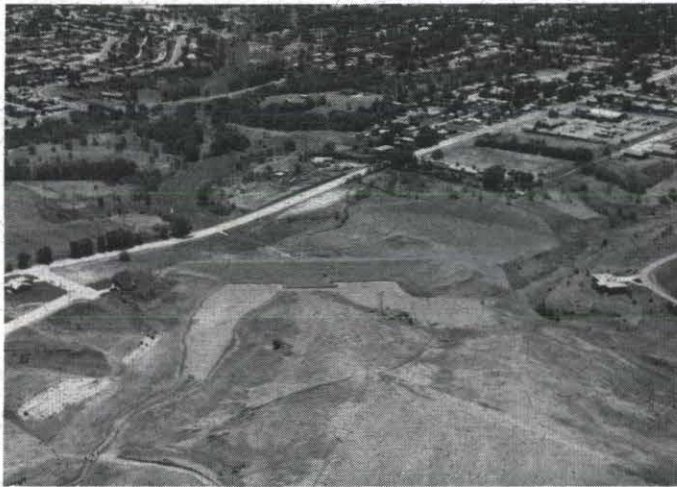
Sponsor: Lower Loup NRD

This clearing and snagging project was constructed to improve the channel capacity of Mira Creek adjacent to the Village of North Loup in order to reduce flooding in that community. The project also included the replacement of an irrigation lateral flume with a siphon. A NRDF grant of \$68,952.41 was awarded and the project was completed in 1985.

### **OLIVER RESERVOIR**

Sponsor: South Platte NRD

The Oliver Reservoir Project involved the reconstruction of an existing dam on Lodgepole Creek that originally was used to store water for irrigation. The project, located west of Kimball, includes extensive recreational development around the 280 acre reservoir and the structure also provides flood control benefits. Completed in 1985, the project utilized a NRDF grant of \$1,008,476.54. *(see photo below)*



*McCook*



*Oliver Reservoir*

### **PRAIRIE CREEK**

Sponsor: Central Platte NRD

This project combined snagging and clearing operations to provide a more open floodway along the 42-mile reach of Prairie Creek in Hall County. The project utilized a NRDF grant of \$243,975.00 and was completed in 1980.

### **SCHOOL CREEK**

Sponsor: Upper Big Blue NRD

The School Creek Project was proposed to provide groundwater recharge, flood control, sediment and erosion control, and recreation benefits. Dam Site #3, located north of Sutton, was to be the first structure to be constructed in the School Creek Watershed. It was to have a permanent pool of 160 acres but was suspended by the project sponsor in 1982 due to unanticipated costs that made the project economically infeasible. \$45,724.71 in NRDF funds were expended for engineering and land rights appraisals.



### **SILVER CREEK**

Sponsor: Central Platte NRD

The Silver Creek Flood Control Project consists of an excavated floodway along Silver Creek and Clarks Drain in Merrick County. The project is designed to convey runoff water from agricultural land in the area. Reduced flooding and improved crop production have resulted from the project. Completed in 1987 the project received a NRDF grant of \$2,307,175.53.

### **SOUTH FORK 2-A**

Sponsor: Nemaha NRD

Structure 2-A of the P.L. 566 South Fork Watershed Project is the designated multi-purpose structure in the watershed. The project provides flood control, sediment and erosion control, wildlife habitat and recreation benefits. The site consists of 360 acres and the structure has a conservation pool of 85 acres. The project is located near DuBois in the southeastern part of the state where little water-based recreation is available. The project was awarded a NRDF grant of \$266,632.71 and was completed in 1986.



South Fork 2-A offers S.E. Nebraska area residents a wide range of recreational activities along with flood control benefits.

### **SUMMIT LAKE**

Sponsor: Middle Missouri Tribes NRD (Pappio-Missouri River NRD)

Summit Lake (Structure 5-A) of the P.L. 566 Tekamah-Mud Creek Watershed Project is the designated multi-purpose structure in the watershed. The project provides flood control benefits to the City of Tekamah and to agricultural land and also water-based recreation to a region of the state that includes the Omaha metropolitan area. The project, which utilized a NRDF grant of \$329,191.05, encompasses 400 acres including the reservoir's conservation pool of 190 acres. The project was completed in 1982.

### **THOMPSON CREEK**

Sponsor: City of LaVista

This project resulted in the construction of a floodwater retarding structure in the City of LaVista that provides flood protection to homes that were constructed prior to the adoption of the city's floodplain ordinance. The structure, which is designed to drain down slowly after storm events, was completed in 1986. A NRDF grant of \$240,581.72 was provided to this project.



### **UNION IRRIGATION DISTRICT REHABILITATION**

Sponsor: Union Irrigation District & North Platte NRD

The Union Irrigation District Rehabilitation Project provided for the rehabilitation of the water delivery system of the irrigation district as the earthen laterals were replaced with PVC pipe. Planned and designed by the SCS as a RC&D project, the project was completed in 1989 and was awarded a NRDF loan of \$82,500.00.

### **WALNUT CREEK**

Sponsor: Lower Big Blue NRD

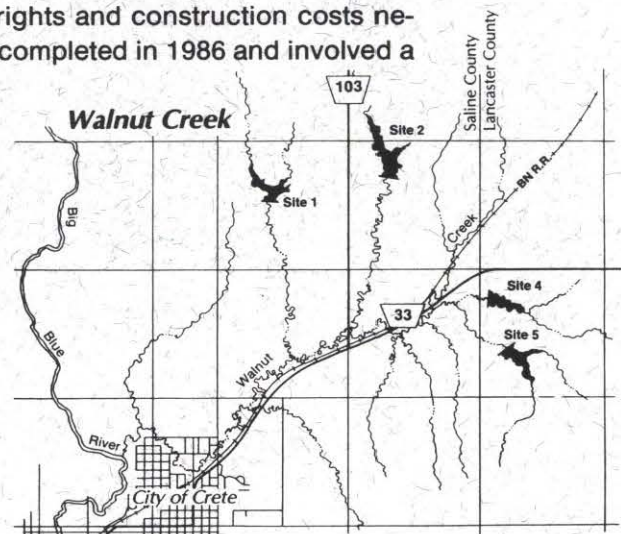
The Walnut Creek Flood Control Project consists of four structures and is the first NRDF project that was developed as a watershed plan. The structures are located east and north of Crete and provide recreation (Site 2) and grade stabilization as well as flood control benefits. The structures have conservation pool areas ranging from 16 to 26 acres. NRDF assistance totalled \$264,225.00 in the form of a grant. The project was completed in 1982.

*(see graphic and photo below)*

### **WAUNETA**

Sponsor: Upper Republican NRD/Village of Wauneta

The Wauneta Flood Control Project consists of realignment and enlargement of the Frenchman Creek channel and the replacement of two bridges. The project provides flood control benefits to the Village of Wauneta. The project as constructed is a revision of the originally planned project that consisted of the construction of flood control structures on selected tributaries of Frenchman Creek above Wauneta. High land rights and construction costs necessitated modification of the original plan. The project was completed in 1986 and involved a NRDF grant of \$556,084.19.



### **WEST SAND DRAW**

Sponsor: Middle Niobrara NRD

This project, which was completed in 1981, involved the construction of an earthen dam on Brown County road right-of-way northwest of Ainsworth. The structure traps sediment which otherwise would be carried down to Plum Creek, a trout stream. The project, which also provides grade stabilization and an improved road crossing, utilized a NRDF grant of \$36,364.91.

### **WILLOW CREEK**

Sponsor: Lower Elkhorn NRD

The Willow Creek Project, located southwest of Pierce, is primarily a water storage, recreation, and fish and wildlife enhancement project. The project area includes approximately 1,700 acres and the 700 acre reservoir provides a variety of water-based recreation opportunities. The project, which was completed in 1986, also provides limited flood control benefits. The project was awarded a NRDF grant of \$3,828,455.53.



## APPROVED PROJECTS

### **BIG PAPIO CHANNEL**

Sponsor: Papio-Missouri River NRD

The Big Papio Channel Project is a Corps of Engineers Section 205 flood control project. The project is located in Omaha and consists of channel improvement work along Big Papillion Creek between Center and 'L' Streets. Land acquisition activities are underway.

### **BUFFALO CREEK**

Sponsor: Central Platte NRD

The Buffalo Creek Watershed Project consists of several flood water retarding structures in the uplands of the watershed north of Lexington. The major purpose of the project is to provide flood protection for the lowland areas of the watershed. The structures will also provide fish and wildlife, recreation, and groundwater recharge benefits. The design for Structure B-1 was altered to add a canal from an existing irrigation canal in order to improve groundwater recharge. The sponsor is pursuing completion of the remaining structures.

### **BUFFALO CREEK**

Sponsor: Papio-Missouri River NRD

The Buffalo Creek Watershed Project in Sarpy County consists of 10 structures. The primary purpose of the project is to provide grade stabilization and erosion control. Reduction of flood damages and improvement of water quality are secondary purposes. The remaining three structures were designed by SCS and currently are under construction.

### **CHALCO HILLS RECREATION AREA**

Sponsor: Papio-Missouri River NRD

The Chalco Hills Recreation Area (Papio Site #20) provides for outdoor recreation facility development and limited land acquisition at the Corps of Engineers' structure site located along I-80 in Sarpy County. The recreation facility development work is completed and the facility was opened to the public on August 1, 1988. The Commission approved funding for the project over a 10-year period with the sponsor to request funds each fiscal year.

### **CZECHLAND LAKE**

Sponsor: Lower Platte North NRD

The Czechland Lake Project will provide for recreation facility development at a P.L. 566 watershed flood control structure near Prague. Designed and principally funded by the Soil Conservation Service, the structure will result in a 85-acre reservoir. The dam is completed and will be closed when the sponsor attains the required level of 75% adequate land treatment above the structure. Recreation facility development is underway.





### **LIBERTY CREEK**

---

Sponsor: Little Blue NRD

The Liberty Creek Project is a recreation and flood control project located wouthwest of Lawrence. The 36-acre reservoir will provide for various recreation activities, including swimming and fishing. The structure will also provide some flood protection to downstream roads and bridges and to agricultural land. The dam is nearly completed and construction of the recreation facilities is underway.

### **LODGEPOLE CREEK AT SIDNEY**

---

Sponsor: City of Sidney

This Corps of Engineers' project consists of channel improvement along Lodgepole Creek and Deadwood Draw in Sidney along with a channel cut-off and an accompanying grade stabilization structure and the replacement/improvement of three city bridges. The project will reduce flooding in Sidney and nearly confine the 100-year flood plain to the improved stream channel. Final design and land rights acquisition work are currently underway.

### **MILL CREEK**

---

Sponsor: Lower Platte South NRD

The Mill Creek Project is a flood control project in Louisville. It consists of the construction of a bypass for Mill Creek flood flows along Highway 50, bridge clean-out work, and the enlargement of an existing berm. Construction is underway.

### **MOORES CREEK**

---

Sponsor: Central Platte NRD

The Moores Creek Project is a flood control project that consists of channel improvement work and the development of small flood water retention/detention cells along the stream. The project utilizes a large (400 Acre-Feet) detention cell constructed by the Nebraska Department of Roads in its Highway 281 improvement project. Construction of the project is underway.

### **NIOBRARA RIVER ACCESS**

---

Sponsor: Middle Niobrara NRD

The Niobrara River Access Project will provide for the development of two public access sites along the Niobrara River east of Valentine. The sites, planned to be 1-2 acres in size, will each include a restroom, a well, picnic tables, trash receptacles, a parking area, and a canoe access point. The sponsor has constructed one site at Brewer Bridge and is working on land rights for the other site.



Canoeing the Niobrara River has become a popular pastime to many Nebraskans over the past few years.

### **OGALLALA**

---

Sponsor: City of Ogallala

The Ogallala Project consists of the reconstruction of two existing dams located on the north side of Ogallala to meet 'high hazard' engineering standards. Urban stormwater facilities, consisting of trunk lines and collectors and associated outfalls to the South Platte River will also be constructed in order to attain comprehensive control of stormwater in the City of Ogallala. Reconstruction of the dams has been completed and the other work is nearing completion.



### **RAWHIDE CREEK** \_\_\_\_\_

Sponsor: Lower Platte North NRD

The Rawhide Creek Flood Control Project is located to the north and west of Fremont and is designed to reduce flood problems in that city. The project consists of (1) the construction of a flood control structure on Trouble Creek, (2) the construction of three channels to divert flood water from Rawhide Creek, and (3) improvement of an existing drainage ditch to convey flood water to the Elkhorn River. The flood control structure is completed and the drainage ditch has been improved.

### **SCRIBNER LEVEE** \_\_\_\_\_

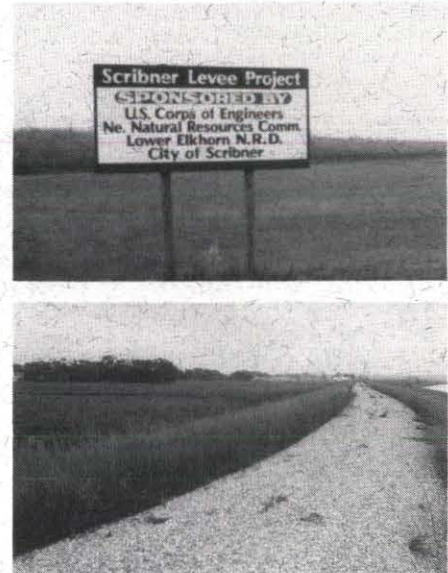
Sponsor: City of Scribner

The Scribner Levee Project consists of the construction of a levee on the northwest, west, south, and southeast sides of Scribner to protect the city from Pebble Creek flooding. The project, designed and primarily funded by the Corps of Engineers, will provide 100-year flood protection to Scribner. The project, as originally designed, has been completed and an additional levee will be constructed on the east side of the city to protect Scribner from the 100-year flood of the Elkhorn River.

---

Heavy rains during June 1990 caused extensive flooding in parts of eastern Nebraska. Scribner Mayor, Dennis Baumert called the levee a 'lifesaver' as four feet of floodwater was kept outside the city which saved \$2,000,000 minimum in damages.

---



### **SKULL CREEK WATERSHED** \_\_\_\_\_

Sponsor: Lower Platte North NRD

This watershed project includes three flood control structures and the construction of dikes along the lower portion of Skull Creek. Located in northeastern Butler and northwestern Saunders counties, the project will also be coordinated with a land treatment program. Limited recreation facility development is planned at one structure site. The Commission has stipulated that a certain level of land treatment above the structures must be attained before actual funding assistance is provided.

### **WARM SLOUGH/TROUBLE CREEK** \_\_\_\_\_

Sponsor: Central Platte NRD

The Warm Slough/Trouble Creek Project is a flood control project that will provide 100-year flood protection to Central City. The project consists of a diversion structure and channel that will intercept flood flows in Warm Slough and in Trouble Creek above Central City and convey them to the Platte River. Final design has been completed and land rights acquisition is underway.

### **WEEPING WATER CREEK WATERSHED** \_\_\_\_\_

Sponsor: Lower Platte South NRD

The Weeping Water Creek Watershed Project is a flood control project located in Cass County. The project consists of 20 floodwater retarding structures that will serve to reduce flooding in the communities of Weeping Water, Nehawka, and Union to agricultural land and to roads and bridges. Final design work is underway.

***A table regarding the financial status of the approved projects follows:***



**FINANCIAL STATUS OF APPROVED PROJECTS**  
June 30, 1990

Project Name	Amount Allocated	Amount Obligated	Amount Expended To Date
<b>FULLY FUNDED:</b>			
Czechland Lake	\$ 204,415.67	\$ 204,415.67	\$ 0.00
Liberty Creek	210,292.50	210,292.50	96,940.60
Mill Creek	76,697.50	76,697.50	8,402.64
Niobrara River Access	26,250.00	26,250.00	10,328.57
Ogallala	602,007.25	602,007.25	443,647.25
Scribner Levee	266,280.00	266,280.00	266,280.00
<b>PARTIALLY FUNDED:</b>			
Big Papio Channel	\$ 1,470,000.00	\$ 242,347.20	\$ 30,439.23
Buffalo Creek-CPNRD	2,625,151.80	2,157,457.30	2,154,510.66
Buffalo Creek-PNRD	589,356.92	584,135.56	422,885.56
Chalco Hills Recreation Area	942,358.95	282,707.70	282,703.40
Lodgepole Creek	807,240.00	400,144.84	0.00
Moores Creek	1,826,292.00	1,382,112.00	984,325.75
Rawhide Creek	2,251,337.08	1,705,448.08	1,451,162.55
Warm Slough/Trouble Creek	1,830,164.00	129,500.00	0.00
Weeping Water Creek Watershed	3,962,370.00	127,500.00	85,110.17
<b>APPROVED BUT NOT FUNDED:</b>			
Skull Creek	389,517.00	0.00	0.00
<b>COMPLETED PROJECTS</b>	<b>15,876,674.75</b>	<b>15,876,674.75</b>	<b>15,876,674.75</b>
<b>TOTAL</b>	<b>\$33,956,405.42</b>	<b>\$24,273,970.35</b>	<b>\$22,113,411.13</b>



**The Nebraska Resources Development Fund provides many Nebraskans with a variety of benefits.**

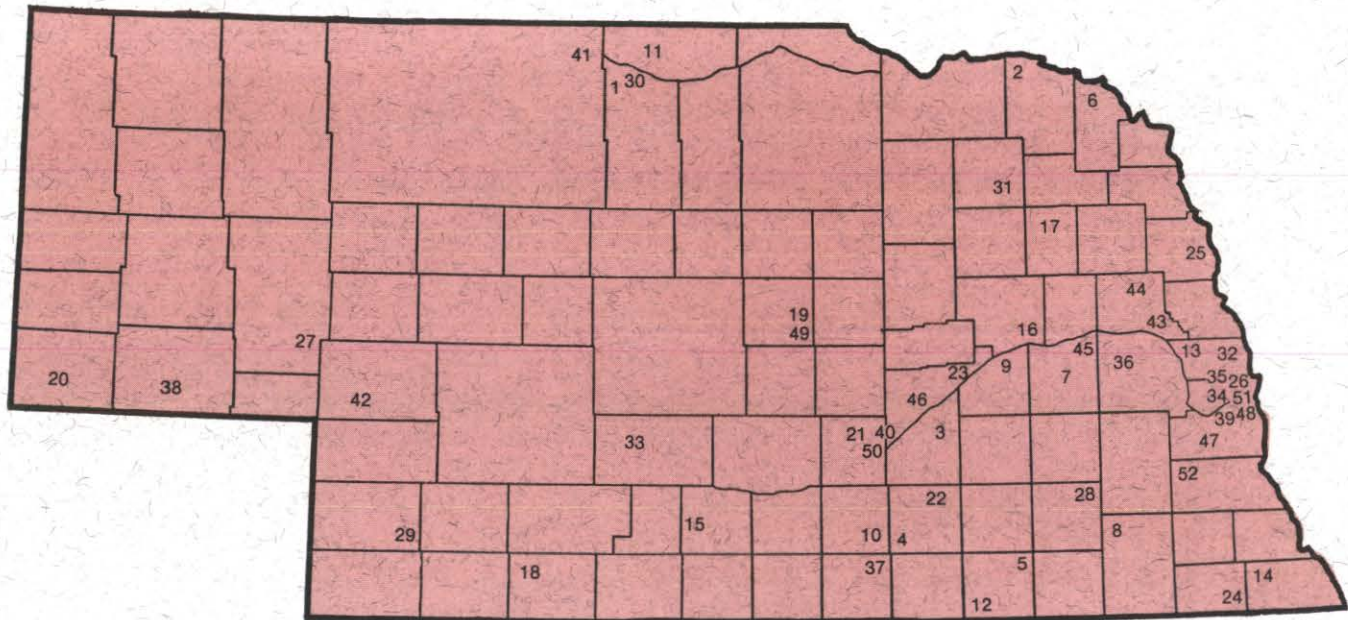


South Fork 2-A offers something for everyone.



# PROJECT LOCATION MAP

September 1990



## COMPLETED PROJECTS

1. Ainsworth Reservoir
2. Antelope Creek
3. Aurora 35-11-6
4. Big Sandy #1
5. Big Sandy #2
6. Buckskin Hills (Aowa Creek)
7. Central Butler
8. Clatonia Creek
9. Clear Creek Watershed
10. Crystal Lake
11. Cub Creek
12. Deshler
13. Elkhorn River Bank Stabilization
14. Long Branch
15. Loomis Pipeline
16. Lost Creek
17. Maskenthine Lake
18. McCook (Kelley Canyon)
19. Mira Creek
20. Oliver Reservoir
21. Prairie Creek
22. School Creek
23. Silver Creek
24. South Fork 2-A
25. Summit Lake
26. Thompson Creek
27. Union Irrigation Dist. Rehabilitation

28. Walnut Creek
29. Wauneta
30. West Sand Draw
31. Willow Creek

## APPROVED PROJECTS

32. Big Papio Channel
33. Buffalo Creek (Dawson Co.)
34. Buffalo Creek (Sarpy Co.)
35. Chalco Hills Recreation Area
36. Czechland Lake
37. Liberty Creek
38. Lodgepole Creek at Sidney
39. Mill Creek
40. Moores Creek
41. Niobrara River Access
42. Ogallala
43. Rawhide Creek
44. Scribner Levee
45. Skull Creek Watershed
46. Warm Slough/Trouble Creek
47. Weeping Water Creek Watershed

## PENDING PROJECTS

48. Cedar Creek
49. Davis Creek Reservoir
50. Lower Wood River/Warm Slough
51. Papio Site 21
52. Upper Little Nemaha Watershed



## PROJECTS PENDING

---

Five project proposals have been submitted and are currently in the planning or review stage. The total amount of NRDF assistance requested by these projects is **\$10,689,000**; however, it is possible that some may be altered or terminated by their sponsors or that some may not be approved for NRDF assistance. Brief descriptions of these pending projects follow:

### **CEDAR CREEK** \_\_\_\_\_

Sponsor: Lower Platte South NRD

Planned and designed by the Corps of Engineers, this project involves the construction of a levee to protect the Village of Cedar Creek from Platte River and Cedar Creek flooding.

### **DAVIS CREEK RESERVOIR** \_\_\_\_\_

Sponsor: Lower Loup NRD

This project would provide for the development of recreation facilities at Davis Creek Reservoir, a component of the Bureau of Reclamation's North Loup Project located near Scotia.

### **LOWER WOOD RIVER/WARM SLOUGH** \_\_\_\_\_

Sponsor: Central Platte NRD

This Corps of Engineers' project would provide flood control along lower Wood River and upper Warm Slough west and south of Grand Island. A four to five mile diversion channel to the Platte River is proposed.

### **PAPIO SITE 21** \_\_\_\_\_

Sponsor: Papio-Missouri River NRD

This project involves the construction of a dam at a site near Papillion that was originally identified by the Corps of Engineers. Along with flood control the project would provide for recreational facility development at the site.

### **UPPER LITTLE NEMAHA WATERSHED** \_\_\_\_\_

Sponsor: Nemaha NRD

This flood control project is being planned by the Soil Conservation Service to include 18 floodwater retarding structures in a watershed located just southeast of Lincoln.



## THE LOOK AHEAD

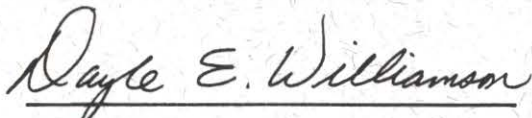
The **Nebraska Resources Development Fund** has assisted Nebraskans in the proper development of the State's land and water resources since 1974. Local subdivisions of government throughout the state have demonstrated they are capable of developing projects that address local natural resources problems and opportunities. It has become almost essential for these entities to cooperate with local, state and federal agencies in order to secure adequate funding for their projects.

Financial assistance from the Resources Development Fund will be necessary to make many local land and water resources projects a reality in the coming years. As can be seen in the following table, demands on the Fund are expected to continue to be strong:

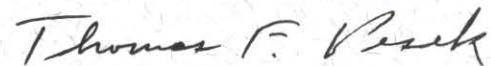
### NRDF FUNDING NEEDS FOR APPROVED PROJECTS Fiscal Years 1991-92 and 1992-93

PROJECT	FY 1991-92	FY 1992-93
<b>I. APPROVED PROJECTS</b>		
Big Papio Channel	601,826.00	0.00
Buffalo Creek (Dawson Co.)	110,000.00	317,569.00
Buffalo Creek (Sarpy Co.)	50,000.00	0.00
Chalco Hills Recreation Area	94,236.00	94,236.00
Lodgepole Creek at Sidney	157,874.00	0.00
Moores Creek	525,280.00	0.00
Rawhide Creek	383,337.00	0.00
Warm Slough/Trouble Creek	823,032.00	0.00
Weeping Water Creek	751,309.00	640,088.00
<b>Subtotal:</b>	<b>3,496,894.00</b>	<b>1,051,893.00</b>
<b>II. PENDING PROJECTS</b>		
Cedar Creek	0.00	100,000.00
Davis Creek Reservoir	57,600.00	0.00
Lower Wood River/Warm Slough	0.00	350,000.00
Papio Site 21	268,500.00	1,085,250.00
Upper Little Nemaha	135,000.00	495,000.00
<b>Subtotal:</b>	<b>461,100.00</b>	<b>2,030,250.00</b>
<b>TOTAL:</b>	<b>3,957,994.00</b>	<b>3,082,143.00</b>

Submitted to the Governor and Legislature  
September 1990.



Dayle E. Williamson  
Director of Natural Resources  
Nebraska Natural Resources Commission



Thomas F. Pesek  
Administrative Coordinator  
Nebraska Resources Development Fund